

KWH METER - DIN RAIL MOUNT



SINGLE PHASE - NMI APPROVED

**NMI
APPROVED**

FEATURES & BENEFITS

- New slimline design
- NMI approved for billing applications
- Digital LCD display
- Tamper seal kit supplied
- 1 year warranty
- Note - Not suitable for solar applications.

SPECIFICATIONS

Materials:

- Housing - Fire resistant ABS

Weatherproof rating:

- IP51

Display:

- Backlit blue LCD

Accuracy class:

- Class 1

Insulation class:

- Class 2

Maximum rated current:

- 100 Amp

Operational current range:

- 0.25 - 100 Amp

Over current withstand:

- 1000 Amp for 0.1s

Nominal voltage:

- 230 Vac

Operating frequency:

- 50 - 60 Hz

Maximum cable capacity:

- 25mm² (neutral 2.5mm²)

Operating temperature:

- -20°C to 65°C

Test output flash rate:

- 1000 impulses per kWh

Power supply indicator:

- Mains power ON

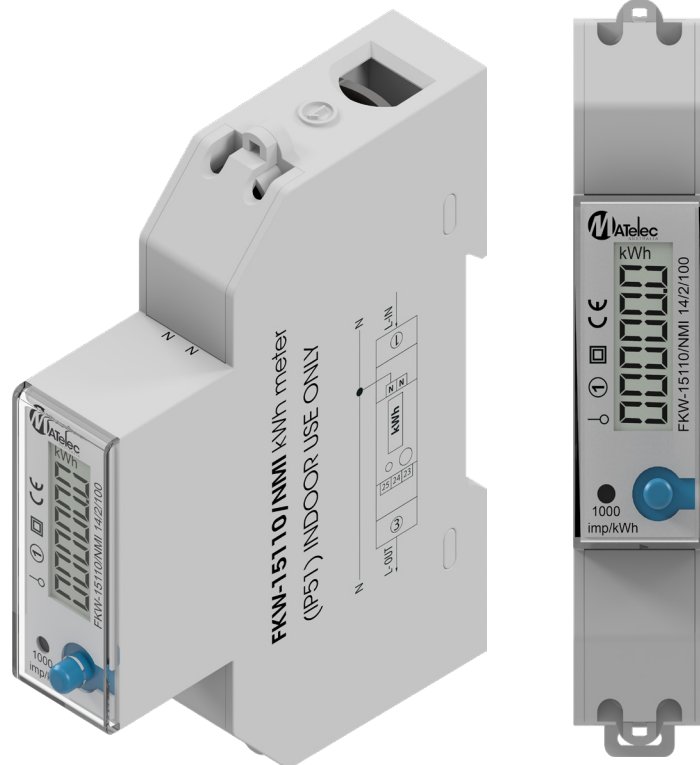
Consumption indicator:

- Flashing on load

Dimensions:

- 90mm (H) x 18mm (W)
x 72mm (D) 1 Module

Report/Certification Number	Date Issued
UL, LLC test report reference no. R11456868-NMI (NMI M6-1)	27/07/2017
NMI M6 Clause A.2.16 Short Term Overcurrent Test C, Ref PL1545-R1	19/04/2017
National Measurement Institute CoA NMI 14/2/100	04/10/2017
IEC Test Report IEC62053-21:2003, IEC 62053-11:2003, SICEM Ref WJ14297 (IEC 62053-21:2003 and IEC 62052-11:2003)	12/12/2014



Code	Description	Packing	MOQ	Ctn
FKW-15110/NMI	KWH Meter - Din Rail Mount - Direct Electronic 0-100A - Single Phase - NMI Approved	1	1	90