

INSTRUCTIONS



Congratulations on your purchase of the FKW-18120 Three Phase Import, Active Power Kilowatt Hour Meter.

SPECIFICATIONS

Accuracy Class:	1
Max Rated Current:	5 (100) A
Nominal Voltage:	230/400Vac
Nominal Frequency:	50Hz
Starting Current:	20mA
Test Output Flash Rate:	1000 imp/kWh
LCD Display:	Backlit, 6 integers, 3 decimals
Max Cable Capacity:	25mm ²
Operating Temperature:	-40°C - +70°C
No of Tariffs:	Single Tariff
Standards:	IEC62052-11, IEC62053-21
Warranty:	1 Year
Backup Battery Life:	10 years
Weatherproof Rating:	IP54

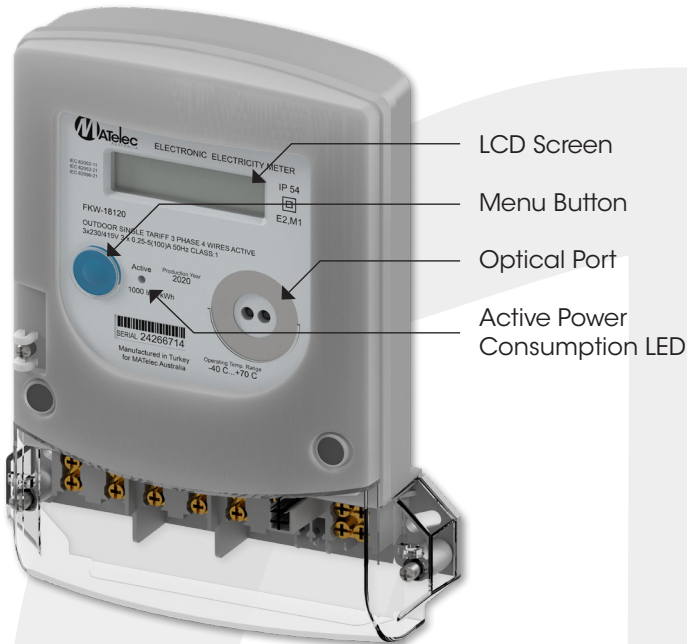
Note - Not suitable for solar applications

IMPORTANT SAFETY INFORMATION

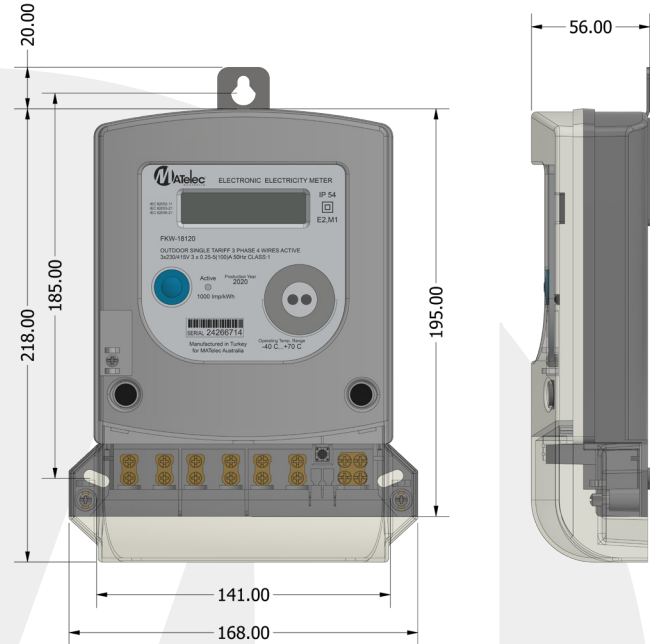
This product must be installed in accordance with local and state regulations, and may only be installed by a licensed electrician.

INSTRUCTIONS

OVERVIEW

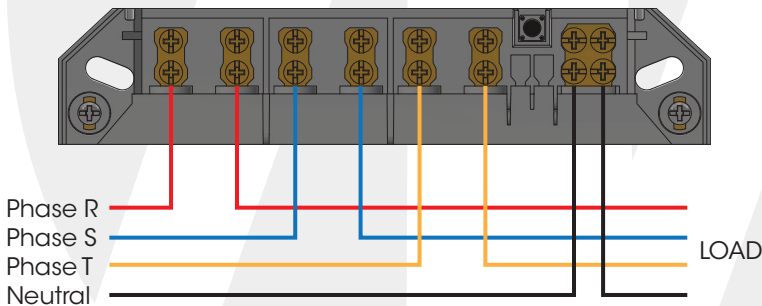


DIMENSIONS



Dimensions are in mm.

WIRING DIAGRAM



OPERATING INFORMATION

LCD - The Meter displays energy data and other parameters on its 6 integer, 3 decimal, LCD screen. LCD Menus are browsed by pressing the menu button.

Active power consumption - Each light pulse indicates 1 Wh active power consumption.

Optical Port - This is for programming purposes only. If this is required, unit must be returned to MATElec Australia.

Screen Displays

Screen 1 (1.8.0) - Displays the Total Consumption in kWh. This is non resettable.

Screen 2 (1.6.0) - Demand Screen. Indicates the maximum positive active energy demand value for a determined time interval.

WARRANTY

The FKW-18120 carries a 12 month warranty. Please contact MATElec Australia with any queries in this regard.