

KWH METER - DIN RAIL MOUNT



SINGLE PHASE

FEATURES & BENEFITS

- For single phase direct metering
- Super compact slimline design
- 1 year warranty
- Note - Not suitable for solar applications.

SPECIFICATIONS

Materials:

- Case - PBT, PC
- Hook - ABS

Weatherproof rating:

- IP51

Display:

- Analogue counter,
5+1 = 00000.9kWh

Accuracy class:

- Class 1

Operational current range:

- 5A - 50A

Nominal voltage:

- 230V \pm 20%

Operating frequency:

- 50Hz

Starting current:

- Below 0.004Ib

Current:

- $\leq 27\text{mA}$

Maximum cable capacity:

- 1 Phase: 10mm² (neutral
10mm²)

Temperature range:

- -25°C - +55°C

Power consumption:

- $\leq 8\text{VA} \leq 0.4\text{W}$

Impulse indication:

- Flashing red

Impulse constant:

- 1000imp/kWh

Pulse output:

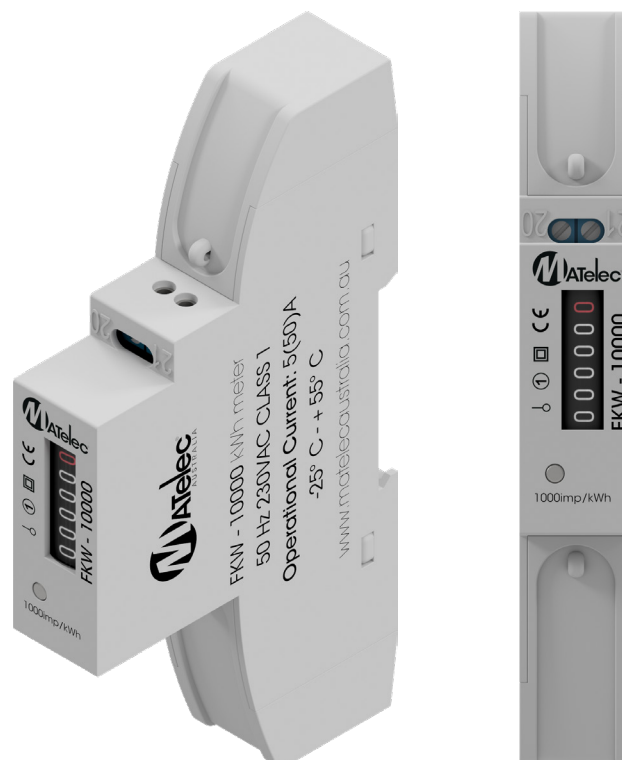
- Voltage - 12~27VMax length of
lead - 20m
- Impulse width - 90ms
- Connect to terminals 20 & 21
- Limit of values - Max 60VCD,
max 50mA

Conforms to:

- EN50470-3:2006
- IEC62052-11
- IEC62053-21

Dimensions:

- 120mm (W) x 63mm (H)
x 18mm (H)



Code	Description	Packing	MOQ	Ctn
FKW-10000	KWH Meter - Din Rail Mount - Direct Electronic 0-50A - Single Phase	1	1	10