

LED WEATHERPROOF FITTINGS



CAPRICORN IP65

DOMESTIC /
TEMPORARY
LIGHTING

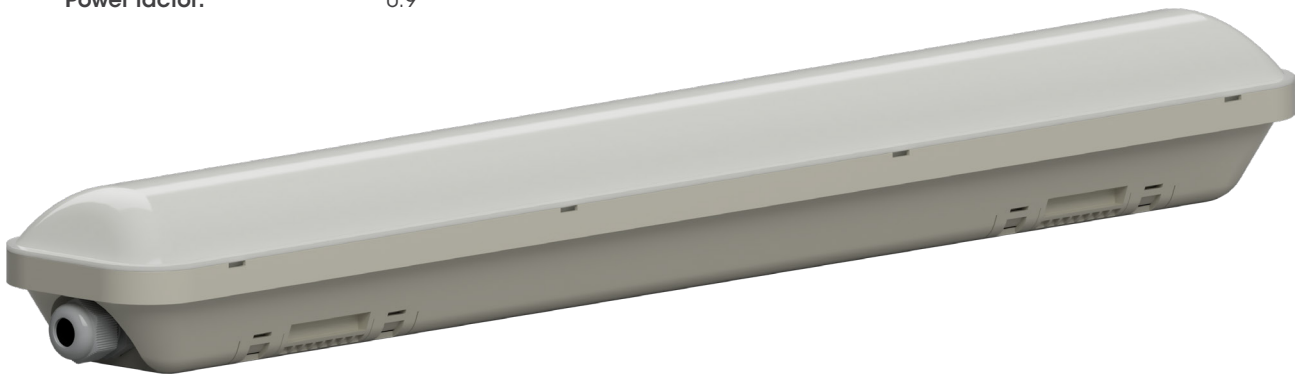
FEATURES & BENEFITS

- Sleek slimline design
- No lens clips required
- Quick wiring access point
- LED driver and LED chip SMD 2835
- SAA approved
- 3 year warranty.

SPECIFICATIONS

Materials:	Lens & base - UV stabilised polycarbonate Mounting brackets - 304 stainless steel
Weatherproof rating:	IP65
Vandal resistance:	IK08
Colour:	6500K daylight
Operating temperature:	-20 °C to 40°C
Lumen/watt:	83lm/W (36W)
Power factor:	0.9

capricorn



DIMENSIONS

Code	Length (mm)	Height (mm)	Width (mm)
CAP-18WCW	600	66	86
CAP-36WCW	1180	66	86



LED WEATHERPROOF FITTINGS - CAPRICORN IP65 RANGE

Code	Description	Lumens	Packing	MOQ	Ctn
CAP-18WCW	Capricorn IP65 LED Fitting - 600mm 18W	1500	1	1	12
CAP-36WCW	Capricorn IP65 LED Fitting - 1200mm 36W	3000	1	1	8