



CONTROL SOLUTIONS OVERVIEW

Innovators, Manufacturers and Distributors of Electrical Products



ABOUT US

The **MATelec** business, founded in the early 1970s in South Africa as a manufacturer and distributor of electrical products, operated on three fundamental and guiding principles:

- An unswerving commitment to integrity at every level
- Doing business with tangible energy and passion
- Ensuring an exceptional customer experience at every touchpoint.

For almost 50 years, the brand has evolved, becoming a highly reputed name in the electrical industry across many countries.

In 2002, building on the well-proven sustainable business model of three decades, **MATelec Australia**, 100% Australian owned and operated, was established. Now, twenty years on, MATelec Australia is a significant player in the industry, sourcing, designing, manufacturing and distributing an exceptional range of electrical products throughout the Oceania region.

In addition to the comprehensive range of electrical commodity products, marketed and distributed through the Electrical Wholesaler network, MATelec Australia manufactures 'in-house', a vast range of high-quality and cutting-edge pump and motor control products that perform strategic functionality in infrastructure assets across many industries, including Municipal Water Reticulation - Supply and Treatment, Mining, Agriculture, Military, Health and HVAC. The manufacturing facility, located in Victoria, has further distinguished the company and brand with the capability to design, engineer, manufacture and deliver 'site/application ready' control panels for thousands of strategic installations, both locally and abroad.

MATelec Australia has invested heavily in the 'Australia Manufacturing Community', with a significant commitment to growth in local employment as it executes its year-on-year expansion plans. The Team at MATelec Australia reflect the truly unique dynamic 'customer focused' culture that drives the continuous development of valuable products and services that will not only meet but exceed the expectations of the market for the now and beyond!





OUR MISSION

To passionately pursue the development of products, services and solutions, that represent '**exceptional value**' and reflect the inspirational and dynamic culture of the company, while enriching the community of clients, staff, suppliers and stakeholders involved in the process.

OUR VISION

To be the '**No.1 choice**' and '**most trusted source**', for all products and services we offer the market, through an enduring commitment by our entire team, to consistently deliver '**service excellence**', '**superior quality**', '**functional innovation**' and '**tangible value**'.

BENEFITS OF MATELEC AUSTRALIA CONTROL PANELS

- Australian designed, manufactured and compliant
- Comprehensive Operation & Maintenance Manuals, including electrical circuit diagrams with every panel
- Colour coded cabling and terminal connection labels for simple circuit identification and connections
- Serial No. recording for traceability and after-sales support
- Qualified technical product support helpline.
- Every control panel is electrically connected and functionally tested before packaging
- Proprietary packaging, dedicated for controller 'in-transit' protection.
- Vast range of controller enclosures available to meet application requirements
- Capable of customised and bespoke control panels for specific installations
- Over one hundred thousand MATElec Australia controllers performing essential functions in strategic installations, nationally.



**Australian Owned
& Operated**



**5 Star Customer
Service**



**Service
Excellence**

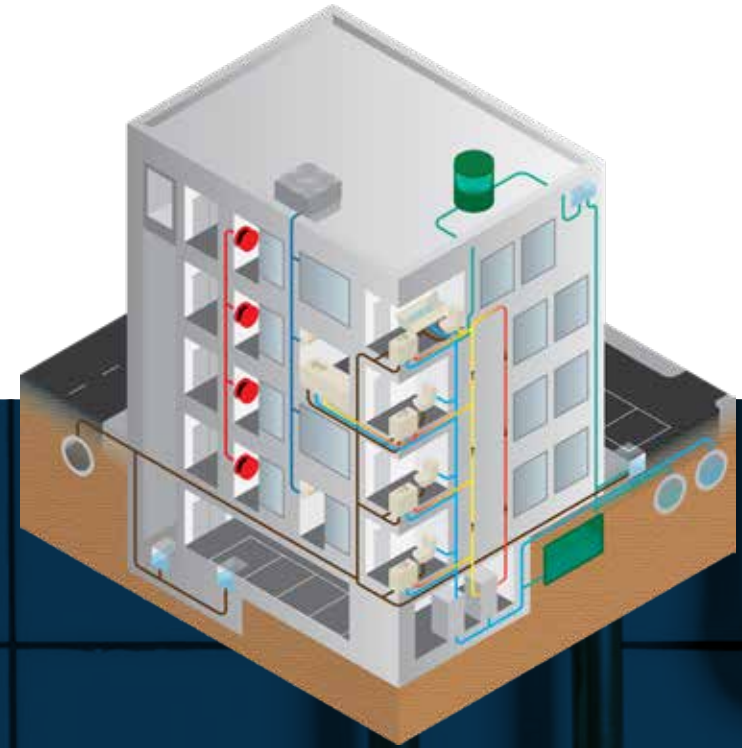
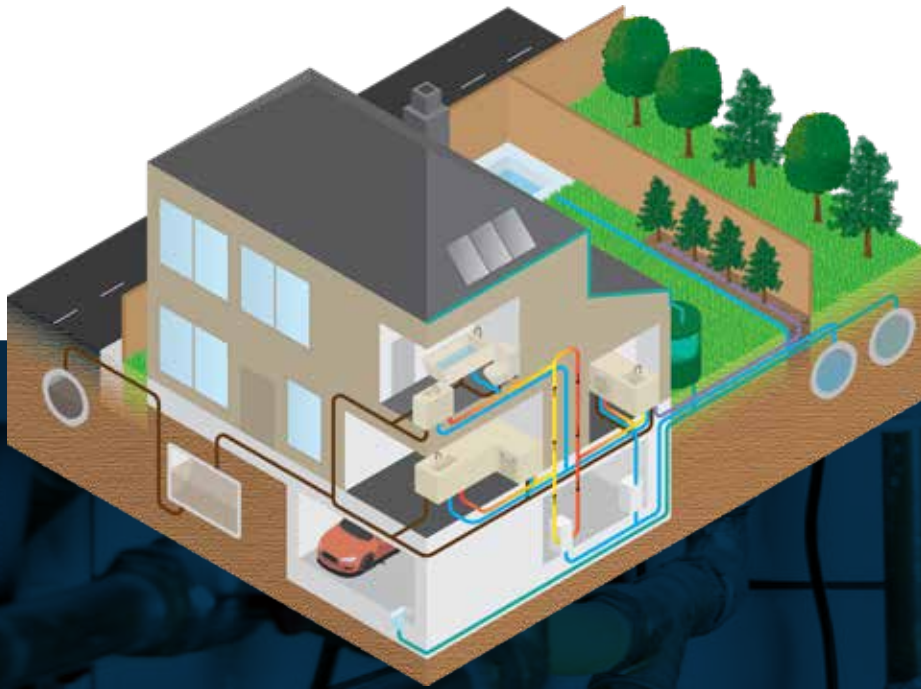




CONTENTS

Applications	6
The Principle of Pump, Valve & Motor Control	8
Econo Pump Controllers	9
Standard Pump Controllers	10
Rain/Mains Pump Controllers	11
Level Alarm & Undersink Controllers	12
HydroTOUCH Pump Controllers	13
HydroWHIZ Pump Controllers	14
HydroSTART Pump Controllers	15
Tank Level Control & Indication	16
Power Distribution & Management	18
Fire Pump Controllers	19
Remote Monitoring & Control Equipment	20
Level Switches & Sensors	21
End to End Solutions	22
The Genius of Innovation	23

APPLICATIONS

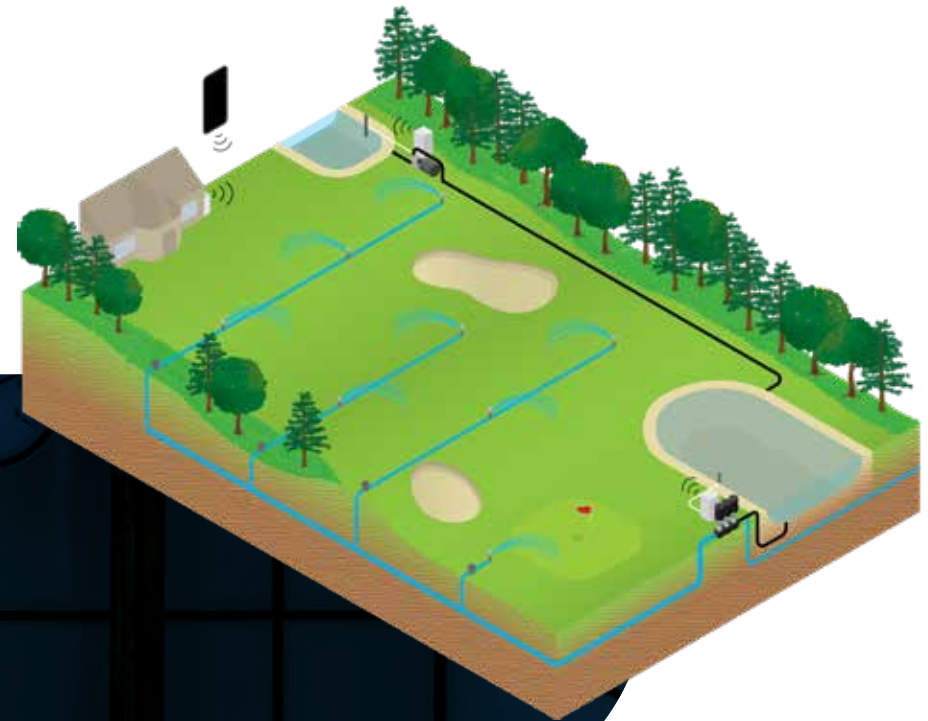
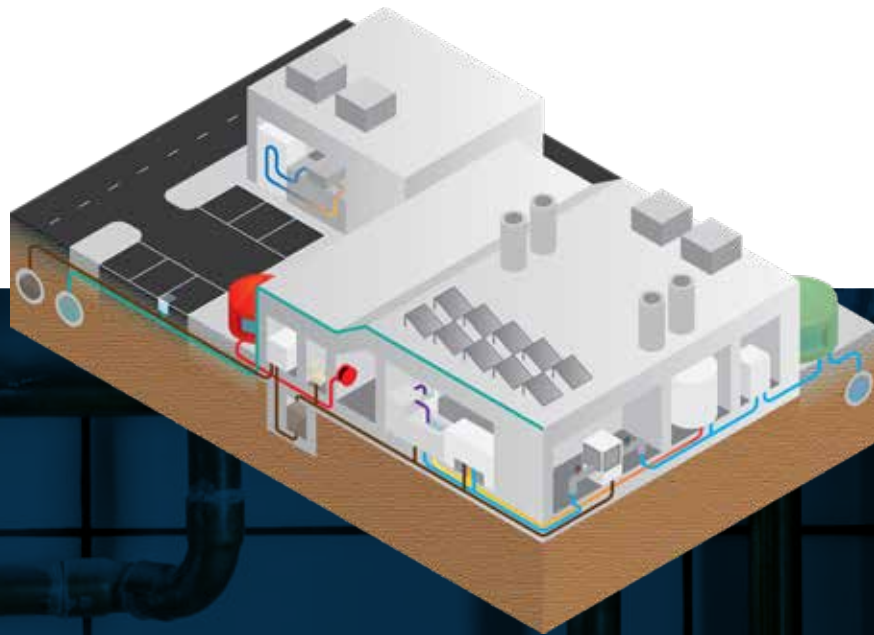


RESIDENTIAL

- Sewage
- Swimming pool
- Irrigation
- Rainwater harvesting
- Grey water
- Pressure boosting
- Hot water circulation
- Stormwater
- Undersink/sullage interlock.

BUILDING SERVICES

- Fire systems - jacking pump
- Condensation catchment
- Emergency storage - tank fill
- Stormwater
- First flush diversion system
- Rainwater harvesting
- Hot water circulation
- Pressure boosting
- Undersink/sullage interlock
- Lift well sump/seepage
- Sewage lift.



INDUSTRIAL/COMMERCIAL

- Fire systems - jacking pump
- Chiller/cooling
- Temperature control
- Constant pressure
- Flow control
- Level control
- Pressure boosting
- Hot water circulation
- Filtration
- Dosing systems
- Tradewaste management
- Stormwater.

IRRIGATION

- Rainwater harvesting
- Storage balancing
- Water transfer
- Constant pressure
- Local weather interface
- Remote monitoring & control
- Fertiliser dosing
- Filtration.

THE PRINCIPLE OF PUMP, VALVE & MOTOR CONTROL

POWER SUPPLY

Single Phase | Three
Phase | 12 Volt
24 Volt | 240 Volt
415 Volt | 1000 Volt

OUTPUTS

Motors | Pumps | Blowers
Compressors

AUX OUTPUTS

Alarms | Light Indicators
Communicators | Dialers

INPUTS

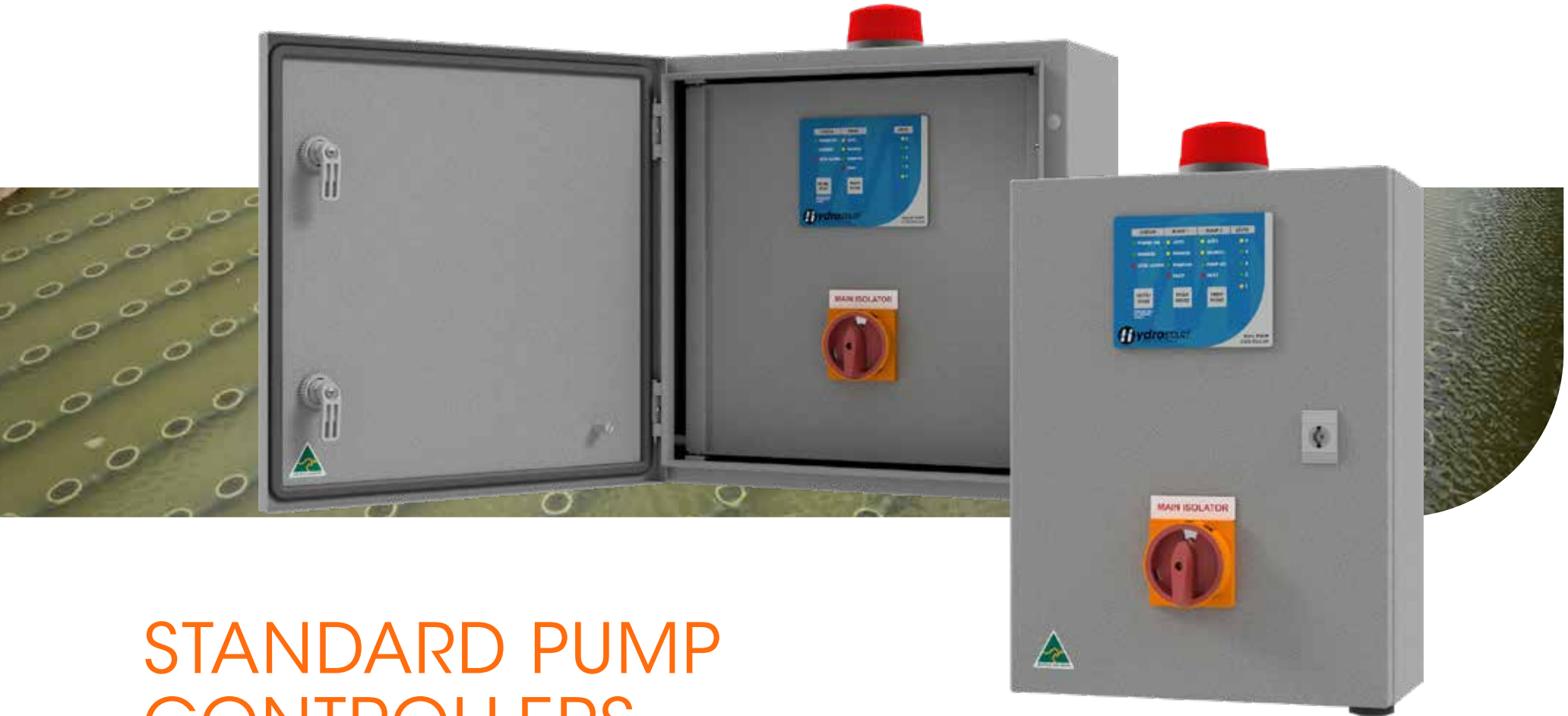
Level | Pressure
Temperature
Conductivity Radar
Ultrasonic Analogue
Digital





ECONO PUMP CONTROLLERS

- Single or three phase, single pump control
- DOL, Soft Start and VSD options
- Two digital inputs for cut off and working level
- Selector switch for pump auto/off/manual control, potentiometer for manual speed adjustment on VSD version
- Ideal for non-complex applications.



STANDARD PUMP CONTROLLERS

- Single or three phase, single or dual pump control
- Electronic or thermal overload protection of pumps, soft start option
- Electronic keypad interface with status indicator lights, pump auto/off/manual control and alarm mute/reset button
- Visual and audible alarms
- Control module with dipswitches for adjusting configuration
- Provision for up to 4 digital inputs, volt free outputs for BMS
- Ideal for pump out, tank fill, pressure boosting or hot water circulation applications
- Function features include automatic duty alternation, staggered start, anti-seize protection and maximum idle timer.

RAIN/MAINS PUMP CONTROLLERS



- Single or three phase, single or dual pump control
- Thermal overload protection of pumps
- Electronic keypad interface with valve, pump and system status, system test button
- Provision for low level float and pressure switch inputs
- Pulse latching solenoid valve - No continuous energisation
- Ideal for pressure pumping applications with rain/mains changeover
- Switches to rain water when available to maximise rain water usage
- Switches to mains water on low tank level, power failure or pump fault
- Quick plug version available for simple DIY applications.



LEVEL ALARM & UNDERSINK CONTROLLERS

LIQUID LEVEL ALARMS

- Electronic keypad interface with power and alarm status, mute button
- Digital input for high or low level float switch
- Visual and smart auto silencing / chirp mode for audible alarm
- Provides power indication and alarm when a storage tank is either full or empty.



UNDERSINK ALARM & SHUT-OFF CONTROLLERS

- Electronic keypad interface with power and alarm status, mute button
- Smart auto silencing / chirp mode for audible alarm
- Pulse latching solenoid valve - No continuous energisation
- Shuts off water supply and/or dishwasher on high level or power failure, preventing any further inflow into the undersink chamber
- Options available include moisture sensing, additional valve/dishwasher outputs.

HydroTOUCH PUMP CONTROLLERS



- Single or three phase, 1-12 pump control
- DOL, Soft Start and VSD options
- HydroTOUCH control module and large touch screen HMI
- Provision for 2x analogue, 6x digital and 1x pulse inputs
- Volt free BMS outputs and Modbus RS485 SCADA connection
- Level, pressure, temperature or flow control modes
- PID control directions seamless increase or decrease of level, pressure, flow or temperature
- Advanced functionality and protection features
- Streamlined, user friendly system setup wizard
- Time and date stamped alarms, logged data and trend graphs
- Advanced parameter adjustment
- Highly flexible to suit almost any application.



SUBMERSIBLE SEWAGE | SUBMERSIBLE STORMWATER | WATER TRANSFER
PRESSURE BOOSTING | CONSTANT LEVEL, PRESSURE, TEMPERATURE OR FLOW
HOT WATER CIRCULATION | CHILLER SUPPLY | PROCESS WATER CONTROL



SUBMERSIBLE SEWAGE | SUBMERSIBLE STORMWATER
WATER TRANSFER | PRESSURE BOOSTING | CONSTANT LEVEL,
PRESSURE OR TEMPERATURE | HOT WATER CIRCULATION
CHILLER SUPPLY



HydroWHIZ PUMP CONTROLLERS

- Single or three phase, 1-6 pump control
- DOL, Soft Start and VSD options
- HydroWHIZ control module and touch screen HMI
- Provision for 1x analogue and up to 8x digital inputs
- Volt free BMS outputs and Modbus RS485 SCADA connection
- Level, pressure, flow or temperature control modes
- PID control directions seamless increase or decrease of level, pressure, flow or temperature
- Advanced functionality and protection features
- Streamlined, user friendly system setup wizard
- Time and date stamped alarms, logged data and trend graph
- Highly flexible to suit almost any application.

HydroSTART PUMP CONTROLLERS



- Capacitive Touch HMI
- Fast Action Electronic Overload Protection
- Input Status/Level Indication
- Additional Control Inputs and Function Flexibility
- Current Sensing by Pump – Single & Three Phase
- 8 x digital inputs for greater control, including remote enable/disable
- Dual Overload range (LR & HR) 0.1 to 16amp
- Modbus RTU Serial RS-485 Connection
- Under/Zero current protection c/w alarm/fault feature
- Short circuit isolation protection providing individual pump isolation benefit
- 8 x Mode selector switches – increased functionality
- Data logging functionality



SUBMERSIBLE SEWAGE | SUBMERSIBLE STORMWATER
WATER TRANSFER | PRESSURE BOOSTING

TANK LEVEL CONTROL & INDICATION

TANK FILL VALVE CONTROLLERS

- Ideal for maintaining required water level in a tank
- Valve is energised open when tank level reaches 'fill' setpoint and de-energised valve when tank 'full' setpoint or power failure occurs
- Dual float version available for greater differential between 'fill' and 'full' setpoints.

TANK FILL PUMP CONTROLLERS

- Controls an automatic pump used to transfer water from one tank to another
- Shuts off pump when storage tank is full.

LOW LEVEL PUMP SHUT-OFF CONTROLLER

- Controls an automatic pump used to pump water out of a tank for various uses
- Shuts off pump when tank level is low.



TANK FILL DIVERSION VALVE CONTROLLERS

- Weatherproof GPO for air compressor, supplying air actuated valve
- Standard option closes valve when tank is full to divert further rainwater to stormwater
- First flush option allows set amount of rain fall to flush collection areas before diverting flow to fill tank.



GREY WATER PUMP CONTROLLER

- Monitors level of grey water in a tank
- Pumps out grey water when start float switches, until pump stop float switches
- Runs pump if water level is above stop float and pump has not run for 24 hours, to maintain minimum tank level.

TANK LEVEL INDICATORS

- 4 float switch or 4-20mA hydrostatic level transducer options
- Provides an extremely accurate and informative indication of water level in a tank
- Wireless options for applications with long distance between tank and indicator location.



POWER DISTRIBUTION & MANAGEMENT



POWER DISTRIBUTION BOARDS

- Provides constant power supply to pumps with integral VSDs
- Individual pump indication and control.



POWER MANAGEMENT SYSTEMS

- Battery backup or automatic generator changeover options
- Provides constant power to a control panel, switching over to battery or generator power on mains failure.



FIRE PUMP CONTROLLERS



REMOTE START/STOP PUMP CONTROLLER

- Provides remote status indication and start/stop control for 1 or 2 fire pumps.



FIRE HOSE REEL PUMP CONTROLLER

- Pump control and status indication for a fire hose reel pump
- Compliant with AS 2941-2013: Section 6.



JOCKEY/JACKING PUMP CONTROLLER

- Pump control and status indication for a jockey/jacking pump
- Compliant with AS 2941-2013: Section 5.



RESIDENTIAL SPRINKLER PUMP CONTROLLER

- Pump control and status indication for a residential sprinkler pump
- Compliant with AS 2941-2013: Section 7.

REMOTE MONITORING & CONTROL EQUIPMENT

REMOTE STATUS INDICATORS

- Provides status indication and alarms from a Standard Single/Dual Pump Controller in a convenient location.



REMOTE ALARM INDICATORS

- Provides visual and audible alarm indication from a remote source.



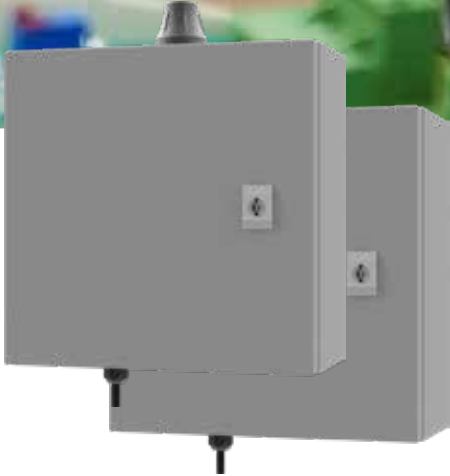
SMS ALARM/STATUS COMMUNICATORS

- Features the ME-Link IoT/SMS module
- SMS messaging of up to 8x digital/1x analogue and modbus inputs including power/battery status
- Easy programming with SMS commands
- Remote control via 2x relay outputs
- Advanced features include notification repeat modes and reminder messages.



REMOTE SIGNAL COMMUNICATORS

- Radio or SMS communication options
- Enables remote switching of a controller in applications where cables are impractical
- Option for applications where two way communication between control panels is required.



LEVEL SWITCHES & SENSORS



HYDROSTATIC LEVEL TRANSDUCERS

- Potable water or sewage/ wastewater options
- Multiple depth ranges & cable lengths available.

CONDUCTIVITY SENSING PROBES

- Single point, 4 point & 10 point options
- Various probe lengths available.

FLOAT SWITCHES & MULTI LEVEL FLOAT TREES

- 9004, 9006, 9010 series
- 9011 High Heat
- Poly and stainless steel magnetic
- 3 or 4 float trees.

PRESSURE TRANSDUCERS



CABLE ACCESSORIES

END TO END SOLUTIONS

WITH YOU FROM CONCEPT TO COMPLETION



CONCEPT



DESIGN



MANUFACTURE



AFTERCARE

Our control panels can be modified in a multitude of ways to suit specific requirements, including:

- 304 or 316 Grade Stainless Steel enclosures
- Mine spec enclosures
- Free standing enclosures with integral plinth
- Intrinsically safe input barrier relays
- Conductivity relays and probe inputs
- Generator input socket c/w manual or automatic changeover
- ME-Link module for SMS status/alarm messaging
- Battery backup high level alarm
- Individual pump RCD protection.

In addition to modifications to the standard range of controllers, customised/bespoke control solutions for complex projects in a wide range of industries are available. Our team will oversee the entire process from the initial concept through to design, manufacturing and testing, application ready control systems.



THE GENIUS OF INNOVATION

TOTAL SOLUTION PROVIDERS

ME-Link[®]
IoT/SMS MODULE

 **Propitect**



REMOTE MONITORING & CONTROL PLATFORM

- Custom user interface dashboard
- Cloud data storage servers
- Secure data link and service
- IoT hardware for asset data capture
- Onsite Wi-fi link for servicing and setup.



**Pump Control &
Monitoring Specialists**

Contact your account manager
today, with any Pump & Motor Control
enquiries you have.

(03) 5821 9433

customer@matelecaustralia.com.au

