



PRODUCT RANGE

EDITION 24 Version 5

**INNOVATORS, MANUFACTURERS &
DISTRIBUTORS OF ELECTRICAL PRODUCTS**

ABOUT US

The MATElec business, founded in the early 1970s in South Africa as a manufacturer and distributor of electrical products, has always operated on three fundamental and guiding principles:



- An unswerving commitment to integrity at every level
- Doing business with tangible energy and passion
- Ensuring an exceptional customer experience at every touchpoint.

For almost 50 years, the brand has evolved, becoming a highly reputed name in the electrical industry across many countries.

In 2002, building on the well-proven sustainable business model of three decades, MATElec Australia, 100% Australian-owned and operated, was established. Now, over twenty years on, MATElec Australia is a significant player in the industry, sourcing, designing, manufacturing and distributing an exceptional range of electrical products throughout the Oceania region. In addition to the comprehensive range of electrical commodity products, marketed and distributed through the Electrical Wholesaler network, MATElec Australia manufactures 'in-house', a vast range of high-quality and cutting-edge pump and motor control and system automation products that perform strategic functionality in infrastructure assets across many industries, including Municipal Water Reticulation - Supply and Treatment, Mining, Agriculture, Military, Health and HVAC. The manufacturing facility, located in Victoria, has further distinguished the company and brand with the capability to design, engineer, manufacture and deliver 'site/application ready' control panels for thousands of strategic installations, both locally and abroad.

MATElec Australia has invested heavily in the 'Australia Manufacturing Community', with a significant commitment to growth in local employment as it executes its year-on-year expansion plans. The Team at MATElec Australia reflect the truly unique and dynamic 'customer-focused' culture, that drives the continuous development of valuable products and services, that will not only meet, but exceed, the expectations of the market for the now and beyond!





OUR MISSION

We empower industry with solutions that deliver lasting value, to shape and sustain essential infrastructure.

OUR VISION

A thriving ecosystem, inspired by happy people, united in creating innovative solutions for social and environmental prosperity.



National Distribution
Network



Free
Delivery



Same Day
Dispatch



5 Star Customer
Service



Qualified Technical
Support

CONTENTS

INSTALLATION & CABLE MANAGEMENT

CABLE TIES	
NYLON	7
NYLON WITH STAINLESS STEEL PAWL	8
COATED 316 STAINLESS STEEL	8
316 STAINLESS STEEL	9
HOOK & LOOP	9
CABLE TIE MOUNTS	10
CABLE CLIPS	
NAIL IN	10
SOLAR	11
GIRDER CLIPS	11
CONDUIT SADDLES	
HOT-DIPPED GALVANISED	12
ZINC PLATED	12
316 STAINLESS STEEL	13
CABLE GLANDS	
INSERTS & PLUGS	13
NYLON	14
MULTI-HOLE	14
TAPE	
DUCT / JOINING & SEALING	15
RAINBOW / INSULATION	15
ROOF PENETRATION SEALS	16
SNAP BUSHINGS - NYLON	16
THREADED BUSHINGS - PVC	17
CORRUGATED CONDUIT	17
CONDUIT FITTINGS - PVC	18
MOUNTING BRACKETS	25
JUNCTION BOXES	25
WALL BOX - FIRE RATED	26
UNDERGROUND WARNING TAPE	26
CABLE CONNECTORS	
INSULATED	27
IP68 WATERPROOF	27
STRIP CONNECTORS	28
ROPE	
TELSTRA	28
PULL LINE	29
JACK CHAIN	29
CATENARY WIRE & ACCESSORIES	30

DETECTION, SAFETY AND WARNING

SMOKE DETECTORS - PHOTOELECTRIC	
240V	35
WIRELESS - 10 YR LITHIUM BATTERY	35
240V - 10 YR LITHIUM BATTERY WITH OPTIONAL WIRELESS INTERCONNECT MODULE	36

INTERCONNECT MODULE	36
INTERCONNECT REMOTE	37
ADAPTOR BASE PLATE - SUITS FSA-60000	37
ALARMS / BUZZERS	38
STROBES	38
LIQUID LEVEL ALARMS	
STANDARD	39
DELUXE	39
FLUSH MOUNT	40
WITH SMS	40
POWER FAILURE WITH BATTERY BACKUP	41
SOLAR POWERED	41
HIGH & LOW LEVEL	42
WITH CONDUCTIVITY RELAY	42
AUTO PUMP CONNECTION	43
VALVE SHUT-OFF	43

METERING & CONTROL

KWH METERS	
DIN MOUNT - SINGLE PHASE NMI	45
DIN MOUNT - THREE PHASE NMI	45
DIN MOUNT - SINGLE PHASE NMI RS485	46
DIN MOUNT - SINGLE PHASE	46
SURFACE MOUNT - SINGLE PHASE	47
SURFACE MOUNT - THREE PHASE	47
TIME SWITCH	
SINGLE PHASE - ANALOGUE 24 HOUR	48
SINGLE PHASE - 7-DAY PROGRAMMABLE	48
SINGLE PHASE - 24X7 PROGRAMMABLE	49
1 & 2 CHANNEL - BLUETOOTH PROGRAMMABLE	49
MODULAR CONTACTORS	50
MULTI LEVEL FLOAT TREES - 3 & 4 FLOAT	50
FLOAT SWITCHES	
9004 SERIES	51
9006 SERIES	51
9010 SERIES	52
9011 HIGH HEAT	52
MAGNETIC HORIZONTAL	53
STAINLESS STEEL MAGNETIC	53
HYDROSTATIC LEVEL TRANSDUCERS	
POTABLE WATER	54
SEWAGE & WASTEWATER	54
CONDUCTIVITY SENSING PROBES	
SINGLE POINT	55
4 POINT	55
10 POINT	56
PRESSURE TRANSDUCERS	56
TRANSDUCER HANGING BRACKET	57

PUMP CONTROLLERS

TANK FILL CONTROLLERS - PUMP SHUT-OFF	57
TANK FILL CONTROLLERS - VALVE SHUT-OFF	58
LOW LEVEL PUMP SHUT-OFF CONTROLLER	58
UNDERSINK ALARM & SHUT-OFF CONTROLLERS	59
RAINS/MAINS PUMP CONTROLLER	59

FASTENERS, INDUSTRIAL & TOOLING

FASTENERS - MIXED SCREW TYPES	63
ANCHORS	65
WALL PLUGS	66
DIN RAIL	67
METAL ENCLOSURES - SS & MILD STEEL	67
TENSIONING TOOLS - CABLE TIES	68
HOLESAWS - HEAVY DUTY	69

LIGHTING & SENSORS

LED WEATHERPROOF FITTINGS	
OXFORD IP66 - VANDAL RESISTANT	71
CAPRICORN IP65	71
BULKHEAD - BABY EMPEROR	72
FLOODLIGHTS - SLIMLINE LED	72
LAMP HOLDER	73
PLUGS & LEADS	73
DAY/NIGHT SWITCHES	
TWILIGHT - ADJUSTABLE	74
LR50 - FLUSH MOUNT	74
LR100 - FLUSH MOUNT	75
AR20N & BASE - NEMA STYLE	75
MOTION SENSORS	
360° CEILING MOUNT	
DUAL MOUNT - PIR PREMIUM	76
DUAL MOUNT - PIR ECONO	76
FLUSH MOUNT - PIR	77
FLUSH MOUNT - PIR MINI	77
FLUSH MOUNT - MICROWAVE	78
INTERNAL MOUNT - MICROWAVE MINI	78
SURFACE MOUNT - PIR	79
SURFACE MOUNT - MICROWAVE	79
WALL MOUNT	
ROUND - PIR IP44 180°	80
COBRA - PIR IP65 180°	80
SENTRY - PIR IP66 120°	81
MOTION SENSOR COMPARISON CHART	82



PROTECTION THROUGH DETECTION®

MATElec Australia - for a comprehensive range of innovative Smoke Detection and Motion Sensor products





INSTALLATION & CABLE MANAGEMENT

NYLON CABLE TIES



**PREMIUM
GRADE**



FEATURES & BENEFITS

- Bent tip allows for easier pick up, insertion and pull-up
- Smooth rounded edges, for safe handling
- Closely spaced locking teeth permit fine adjustment
- No metal parts (head and pawl are integrally moulded)
- Material sourced from the USA
- RoHS compliant
- Low smoke - Halogen free
- Other sizes available on project request.

Code	Size	Colour	Rated Load	Packing	MOQ	Ctn
NCT-100/25B	100 x 2.5mm	Black	8kg	100/Pack	1 Pack	500
NCT-100/25N	100 x 2.5mm	Natural	8kg	100/Pack	1 Pack	500
NCT-150/32B	150 x 3.2mm	Black	18kg	100/Pack	1 Pack	200
NCT-150/32B/1000	150 x 3.2mm	Black	18kg	1000/Pack	1 Pack	20
NCT-150/32N	150 x 3.2mm	Natural	18kg	100/Pack	1 Pack	200
NCT-200/48B	200 x 4.8mm	Black	22kg	100/Pack	1 Pack	100
NCT-200/48B/1000	200 x 4.8mm	Black	22kg	1000/Pack	1 Pack	10
NCT-200/48N	200 x 4.8mm	Natural	22kg	100/Pack	1 Pack	100
NCT-200/48N/1000	200 x 4.8mm	Natural	22kg	1000/Pack	1 Pack	10
NCT-250/48B	250 x 4.8mm	Black	22kg	100/Pack	1 Pack	100
NCT-250/48B/1000	250 x 4.8mm	Black	22kg	1000/Pack	1 Pack	10
NCT-300/48B	300 x 4.8mm	Black	22kg	100/Pack	1 Pack	80
NCT-300/48B/1000	300 x 4.8mm	Black	22kg	1000/Pack	1 Pack	8
NCT-300/48N	300 x 4.8mm	Natural	22kg	100/Pack	1 Pack	80
NCT-300/48N/1000	300 x 4.8mm	Natural	22kg	1000/Pack	1 Pack	8
NCT-300/76B	300 x 7.6mm	Black	55kg	100/Pack	1 Pack	50
NCT-370/48B	370 x 4.8mm	Black	22kg	100/Pack	1 Pack	50
NCT-370/76B	370 x 7.6mm	Black	55kg	100/Pack	1 Pack	30
NCT-450/76B	450 x 7.6mm	Black	55kg	100/Pack	1 Pack	20
NCT-540/76B	540 x 7.6mm	Black	55kg	100/Pack	1 Pack	10
NCT-810/90B	810 x 9.0mm	Black	80kg	100/Pack	1 Pack	10
NCT-1220/90B	1220 x 9.0mm	Black	80kg	100/Pack	1 Pack	5

INSTALLATION & CABLE
MANAGEMENT

DETECTION, SAFETY
& WARNING

METERING & CONTROL

FASTENERS, INDUSTRIAL
& TOOLING

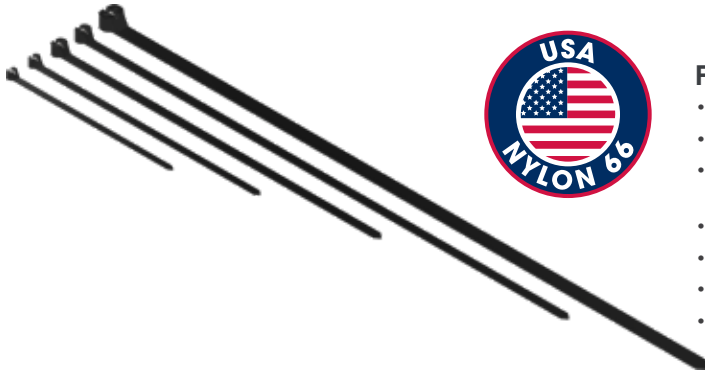
LIGHTING & SENSORS

INSTALLATION & CABLE MANAGEMENT

NYLON CABLE TIES – STEEL PAWL



PREMIUM
S/S PAWL



FEATURES & BENEFITS

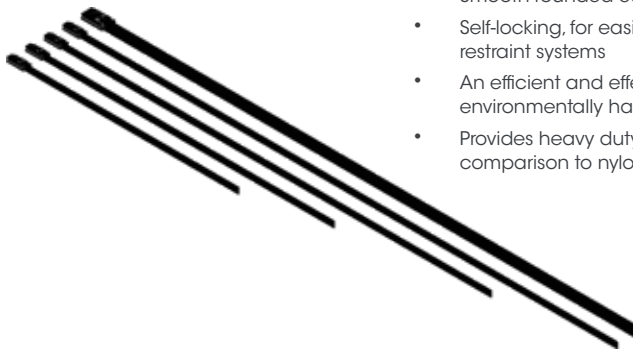
- Stainless steel pawl for added longevity
- Smooth rounded edges, for safe handling
- Closely spaced teeth permit fine adjustment
- Material made in the USA
- RoHS compliant
- Other sizes available on request
- Low smoke - Halogen free.

Code	Size	Rated Load	Packing	MOQ	Ctn
SPCT-100/30B	100 x 3.0mm	8kg	100/pack	1 Pack	500
SPCT-140/36B	140 x 3.6mm	18kg	100/pack	1 Pack	TBA
SPCT-200/48B	200 x 4.8mm	22kg	100/pack	1 Pack	100
SPCT-300/36B	300 x 3.6mm	18kg	100/pack	1 Pack	100
SPCT-370/48B	370 x 4.8mm	22kg	100/pack	1 Pack	50
SPCT-370/70B	370 x 7.0mm	54kg	100/pack	1 Pack	25

COATED 316 STAINLESS STEEL CABLE TIES



TENSIONING
TOOL/GUN
AVAILABLE



FEATURES & BENEFITS

- Stainless steel 'ball bearing' locking mechanism
- Rounded 'off-set' tip, to speed up insertion
- Smooth rounded edges, for safe handling
- Self-locking, for easier and faster installation compared with traditional restraint systems
- An efficient and effective way of securing cables or other materials in environmentally harsh and corrosive conditions
- Provides heavy duty and long-lasting cable bundling solution in comparison to nylon cable ties
 - Suited to Solar, Commercial, Industrial, Mining, Marine and Infrastructure installations
 - Excellent chemical resistance
 - Non flammable
 - Excellent UV resistance
 - 5 year warranty.

Code	Size	Rated Load	Packing	MOQ	Ctn
CCT-150/46SS	150x4.6mm	61	100/Pack	1 Pack	50
CCT-200/46SS	200x4.6mm	61	100/Pack	1 Pack	50
CCT-200/79SS	200x7.9mm	82	100/Pack	1 Pack	25
CCT-260/46SS	260x4.6mm	61	100/Pack	1 Pack	25
CCT-290/46SS	290x4.6mm	61	100/Pack	1 Pack	25
CCT-360/46SS	360x4.6mm	61	100/Pack	1 Pack	25
CCT-360/79SS	360x7.9mm	82	100/Pack	1 Pack	25

316 STAINLESS STEEL CABLE TIES



**TENSIONING
TOOL/GUN
AVAILABLE**



FEATURES & BENEFITS

- Stainless steel 'ball bearing' locking mechanism
- Rounded 'off-set' tip, to speed up insertion
- Smooth rounded edges, for safe handling
- Self-locking, for easier and faster installation compared with traditional restraint systems
- Provides heavy duty and long-lasting cable bundling solution in comparison to nylon cable ties
- Suited to Solar, Commercial, Industrial, Mining, Marine and Infrastructure installations
- Excellent UV and chemical resistance
- Non-flammable
- 5 year warranty.

Other sizes available for project qties.

Code	Size	Rated Load (Kg)	Packing	MOQ	Ctn
SCT-150/46SS	150x4.6mm	61	100/Pack	1 Pack	50
SCT-200/46SS	200x4.6mm	61	100/Pack	1 Pack	50
SCT-200/79SS	200x7.9mm	82	100/Pack	1 Pack	25
SCT-260/46SS	260x4.6mm	61	100/Pack	1 Pack	50
SCT-290/46SS	290x4.6mm	61	100/Pack	1 Pack	25
SCT-360/46SS	360x4.6mm	61	100/Pack	1 Pack	25
SCT-360/79SS	360x7.9mm	82	100/Pack	1 Pack	25
SCT-520/46SS	520x4.6mm	61	100/Pack	1 Pack	25
SCT-520/79SS	520x7.9mm	82	100/Pack	1 Pack	10
SCT-520/12SS	520x12mm	122	100/Pack	1 Pack	10
SCT-680/46SS	680x4.6mm	61	100/Pack	1 Pack	25
SCT-680/79SS	680x7.9mm	82	100/Pack	1 Pack	25

HOOK & LOOP



FEATURES & BENEFITS

- Easily cut to length - reducing waste
- Nylon 6/6 construction for better reusability
- Improved chemical resistance
- Mushroom head hooks
- Available in 12mm and 19mm widths.

Code	Description	Packing	MOQ	Ctn
HKLP-M12/50-BK	Hook and Loop Tie 12mm x 50m Roll - Black	1	1	40
HKLP-M19/25-BK	Hook and Loop Tie 19mm x 25m Roll - Black	1	1	50

INSTALLATION & CABLE MANAGEMENT

CABLE TIE MOUNTS



3M
BACKING TAPE

FEATURES & BENEFITS

- Low profile for slimline aesthetic purposes
- 4-way base for multiple entry options
- 3M backing tape for optimum durability
- Fixing hole provided
- UV stabilised
- Polyamide 6.6 material
- 5.5mm diameter fixing hole.

Code	Description	Packing	MOQ	Ctn
NCTM-M19B	Cable Tie Mount - 19x19mm Black	100 / Pack	1 Pack	200
NCTM-M28B	Cable Tie Mount - 28x28mm Black	100 / Pack	1 Pack	200

NAIL IN CABLE CLIPS



FEATURES & BENEFITS

- Moulded cable grips
- Snug fit on all leading cable brands
- Comprehensive range of packaging options
- High quality jar/crate.

Code	Description	Packing	MOQ	Ctn
FCC-1.5/500J	10mm 1.5mm ² 2 core + E	500/Jar	1 Jar	24
FCC-2.5/500J	12mm 2.5mm ² 2 core + E	500/Jar	1 Jar	18
FCC-1.5/5000	10mm 1.5mm ² 2 core + E	5000/Crate	2 Crate's	2
FCC-2.5/5000	12mm 2.5mm ² 2 core + E	5000/Crate	2 Crate's	2
FCC-6.0/100B	6mm Coax Cable Black	100/Box	1 Box	185
FCC-42001	Plastic crate 2.2l (empty)	1 Crate	1 Crate	1

SOLAR CABLE CLIPS



FEATURES & BENEFITS

- 304 stainless steel for long lasting durability
- Large gripping barbs
- Snug fit to prevent cable damage
- Easy to install and remove
- Reusable cable management design
- Slimline design for cleaner aesthetic appeal
- Suits 2x4.0mm cable (solar/DC).

Code	Description	Packing	MOQ	Ctn
CLIP-M4X2/SS	Solar Cable Clip S/S 2x4.0mm	100 / Pack	1 Pack	4000
CLIP-M4X2/SS-RA	Solar Cable Clip S/S 2x4.0mm - Right Angle	100 / Pack	1 Pack	4000
CLIP-M4X4/SS	Solar Cable Clip S/S 4x4.0mm	50 / Pack	1 Pack	2000

GIRDER CLIPS



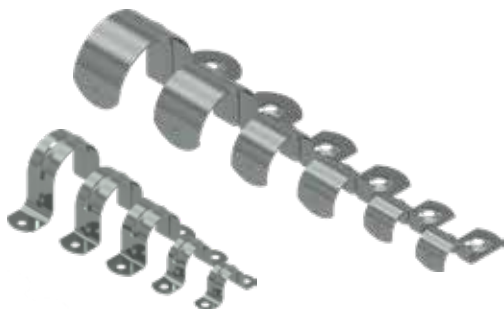
FEATURES & BENEFITS

- Zinc-plated for finish and additional edge protection
- High impact resistance
- Packed in jars for added convenience.

Code	Description	Packing	MOQ	Ctn
FGC-10020	Girder Clip - 16-20mm	100 / Jar	1 Jar	16
FGC-10030	Girder Clip - 25-32mm	100 / Jar	1 Jar	8

INSTALLATION & CABLE MANAGEMENT

ZINC-PLATED CONDUIT SADDLES

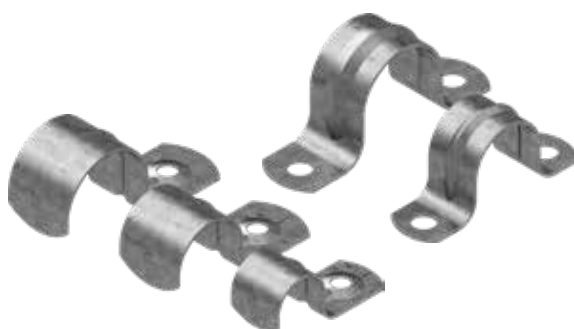


FEATURES & BENEFITS

- Zinc plated for finish and additional edge protection
- Strength rib for stronger rigidity
- Comprehensive range.

Code	Description	Strip Width	Packing	MOQ	Ctn
HS-M16/ZP	Zinc-Plated Saddle - 16mm - Half	20mm	100	100	800
HS-M20/ZP	Zinc-Plated Saddle - 20mm - Half	20mm	100	100	1200
HS-M25/ZP	Zinc-Plated Saddle - 25mm - Half	24mm	100	100	800
HS-M32/ZP	Zinc-Plated Saddle - 32mm - Half	25mm	60	60	720
HS-M40/ZP	Zinc-Plated Saddle - 40mm - Half	32mm	45	45	360
HS-M50/ZP	Zinc-Plated Saddle - 50mm - Half	40mm	20	20	160
FS-M20/ZP	Zinc-Plated Saddle - 20mm - Full	17mm	100	100	1200
FS-M25/ZP	Zinc-Plated Saddle - 25mm - Full	20mm	100	100	800
FS-M32/ZP	Zinc-Plated Saddle - 32mm - Full	24mm	60	60	720
FS-M40/ZP	Zinc-Plated Saddle - 40mm - Full	24mm	45	45	540
FS-M50/ZP	Zinc-Plated Saddle - 50mm - Full	23mm	20	20	360

HOT-DIPPED GALVANISED CONDUIT SADDLES

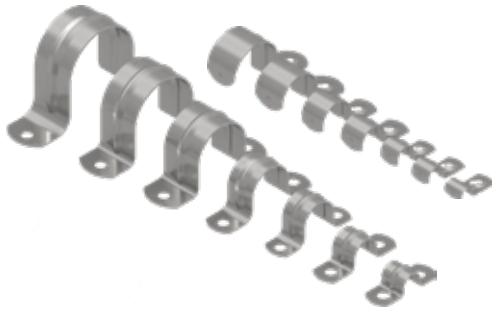


FEATURES & BENEFITS

- Heavy duty corrosion resistant
- Strength rib for stronger rigidity.

Code	Description	Strip Width	Packing	MOQ	Ctn
HS-M20/HDG	Hot-Dipped Galv Saddle - 20mm - Half	20mm	100	100	1200
HS-M25/HDG	Hot-Dipped Galv Saddle - 25mm - Half	24mm	100	100	800
HS-M32/HDG	Hot-Dipped Galv Saddle - 32mm - Half	25mm	60	60	720
HS-M40/HDG	Hot-Dipped Galv Saddle - 40mm - Half	32mm	45	45	540
HS-M50/HDG	Hot-Dipped Galv Saddle - 50mm - Half	40mm	20	20	240
FS-M20/HDG	Hot-Dipped Galv Saddle - 20mm - Full	17mm	100	100	1200
FS-M25/HDG	Hot-Dipped Galv Saddle - 25mm - Full	20mm	100	100	800
FS-M32/HDG	Hot-Dipped Galv Saddle - 32mm - Full	24mm	60	60	480
FS-M40/HDG	Hot-Dipped Galv Saddle - 40mm - Full	24mm	45	45	540
FS-M50/HDG	Hot-Dipped Galv Saddle - 50mm - Full	23mm	20	20	240

316 STAINLESS STEEL CONDUIT SADDLES



FEATURES & BENEFITS

- Non-corrosive
- Suitable for marine and submerged applications
- Strength rib for stronger rigidity
- Comprehensive range.

Code	Description	Strip Width	Packing	MOQ	Ctn
HS-M12/SS	316 S/Steel Saddle - 12mm - Half	19mm	100	100	2000
HS-M16/SS	316 S/Steel Saddle - 16mm - Half	20mm	100	100	1600
HS-M20/SS	316 S/Steel Saddle - 20mm - Half	20mm	100	100	1200
HS-M25/SS	316 S/Steel Saddle - 25mm - Half	24mm	100	100	800
HS-M32/SS	316 S/Steel Saddle - 32mm - Half	25mm	60	60	720
HS-M40/SS	316 S/Steel Saddle - 40mm - Half	32mm	45	45	540
HS-M50/SS	316 S/Steel Saddle - 50mm - Half	40mm	20	20	240
FS-M12/SS	316 S/Steel Saddle - 12mm - Full	16mm	100	100	2000
FS-M16/SS	316 S/Steel Saddle - 16mm - Full	17mm	100	100	1600
FS-M20/SS	316 S/Steel Saddle - 20mm - Full	17mm	100	100	1200
FS-M25/SS	316 S/Steel Saddle - 25mm - Full	20mm	100	100	800
FS-M32/SS	316 S/Steel Saddle - 32mm - Full	24mm	60	60	720
FS-M40/SS	316 S/Steel Saddle - 40mm - Full	24mm	45	45	540
FS-M50/SS	316 S/Steel Saddle - 50mm - Full	23mm	20	20	240

MULTI-HOLE M25 CABLE GLAND INSERTS & PLUGS



FEATURES & BENEFITS

- UV resistant
- CE and RoHS compliant
- Low smoke - Halogen free. (Inserts)
- Compliment MATElec 25mm Nylon Cable Glands (Inserts)

Code	Description	Packing	MOQ	Ctn
MHI-M25/2x6.0	Multi-Hole Rubber Insert - 25mm - 2 x 6.0mm Hole	100	100	3600
MHI-M25/3x5.0	Multi-Hole Rubber Insert - 25mm - 3 x 5.0mm Hole	100	100	3600
MHI-M25/3x7.0	Multi-Hole Rubber Insert - 25mm - 3 x 7.0mm Hole	100	100	3600
MHI-M25/4x5.0	Multi-Hole Rubber Insert - 25mm - 4 x 5.0mm Hole	100	100	3600
MHI-M25/4x6.0	Multi-Hole Rubber Insert - 25mm - 4 x 6.0mm Hole	100	100	3600
MHI-M25/5x5.0	Multi-Hole Rubber Insert - 25mm - 5 x 5.0mm Hole	100	100	3600
MHIP-M5B	Multi-Hole Insert Plug 5mm Black Bag/100	100	100	40000
MHIP-M6B	Multi-Hole Insert Plug 6mm Black Bag/100	100	100	40000

INSTALLATION & CABLE MANAGEMENT

NYLON CABLE GLANDS



FEATURES & BENEFITS

- UV resistant
- Vibration resistant - Ratchet action
- Complete with TPE rubber gasket
- 1.5 metric threads
- CE and RoHS compliant
- Low smoke - Halogen free.

Code	Description	Packing	MOQ	Ctn
NCG-M12/B	Nylon Cable Gland - 12mm - Black	100	100	3000
NCG-M16/B	Nylon Cable Gland - 16mm - Black	50	50	1500
NCG-M20/B	Nylon Cable Gland - 20mm - Black	30	30	900
NCG-M25/B	Nylon Cable Gland - 25mm - Black	20	20	600
NCG-M32/B	Nylon Cable Gland - 32mm - Black	12	12	360
NCG-M40/B	Nylon Cable Gland - 40mm - Black	6	6	180
NCG-M50/B	Nylon Cable Gland - 50mm - Black	4	4	120
NCG-M63/B	Nylon Cable Gland - 63mm - Black	2	2	60

MULTI-HOLE M25 CABLE GLANDS



FEATURES & BENEFITS

- UV resistant
- Vibration resistant - Ratchet action
- Complete with multi-hole insert
- Self-locking end cap
- CE and RoHS compliant
- Excellent strain relief
- Low smoke - Halogen free.

Code	Description	Packing	MOQ	Ctn
NCG-M25/2x6.0	Multi-Hole Nylon Cable Gland - 25mm - 2 x 6.0mm Hole	20	20	600
NCG-M25/3x5.0	Multi-Hole Nylon Cable Gland - 25mm - 3 x 5.0mm Hole	20	20	600
NCG-M25/3x7.0	Multi-Hole Nylon Cable Gland - 25mm - 3 x 7.0mm Hole	20	20	600
NCG-M25/4x5.0	Multi-Hole Nylon Cable Gland - 25mm - 4 x 5.0mm Hole	20	20	600
NCG-M25/4x6.0	Multi-Hole Nylon Cable Gland - 25mm - 4 x 6.0mm Hole	20	20	600
NCG-M25/5x5.0	Multi-Hole Nylon Cable Gland - 25mm - 5 x 5.0mm Hole	20	20	600

DUCT TAPE



FEATURES & BENEFITS

- High quality material
- Flame retardant and cold resistant
- High chemical resistance
- Excellent adhesion
- Excellent weatherability
- Individually wrapped rolls.

Code	Description	Packing	MOQ	Ctn
TAPE-DUCT/BK	Black 30m x 48mm x 0.13mm	1	1	40
TAPE-DUCT/GY	Grey 30m x 48mm x 0.13mm	1	1	40

INSULATION TAPE



FEATURES & BENEFITS

- High quality material
- Flame retardant and cold resistant
- High chemical resistance
- Excellent adhesion
- Excellent weatherability
- Individually wrapped rolls.

Code	Description	Packing	MOQ	Ctn
TAPE-INSUL/BK (black)	Electrical Tape - 20m x 19mm x 0.15mm - Black	1 Pack/10 Rolls	1 Pack	20 Packs
TAPE-INSUL/BL (blue)	Electrical Tape - 20m x 19mm x 0.15mm - Blue	1 Pack/10 Rolls	1 Pack	20 Packs
TAPE-INSUL/GNYL	Electrical Tape - 20m x 19mm x 0.15mm - Green/Yellow	1 Pack/10 Rolls	1 Pack	20 Packs
TAPE-INSUL/MIX	Electrical Tape - 20m x 19mm x 0.15mm - Mixed	1 Pack/10 Rolls	1 Pack	20 Packs
TAPE-INSUL/RD	Electrical Tape - 20m x 19mm x 0.15mm - Red	1 Pack/10 Rolls	1 Pack	20 Packs
TAPE-INSUL/WH	Electrical Tape - 20m x 19mm x 0.15mm - White	1 Pack/10 Rolls	1 Pack	20 Packs

INSTALLATION & CABLE
MANAGEMENT

DETECTION, SAFETY
& WARNING

METERING & CONTROL

FASTENERS, INDUSTRIAL
& TOOLING

LIGHTING & SENSORS

INSTALLATION & CABLE MANAGEMENT

ROOF PENETRATION SEALS

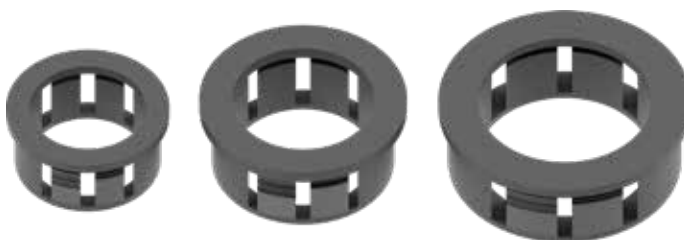


FEATURES & BENEFITS

- UV resistant EDPM rubber
- Durable, lead free material
- Reinforced aluminium frame
- Designed to mould to multiple roof profiles
- 10 year warranty
- Twin side-ports for additional cabling requirements (not on SEAL-5/55B).

Code	Description	Penetration Size	Base Size	Packing	MOQ	Ctn
SEAL-0/20B	Roof Penetration Seal - Square	0-20mm	75x75mm	25	25	500
SEAL-0/35B	Roof Penetration Seal - Square	0-35mm	100x100mm	20	20	200
SEAL-5/55B	Roof Penetration Seal - Square	5-55mm	135x135mm	20	20	100
SEAL-5/50TILE	Roof Penetration Seal - Tile	5-50mm	280x450mm	1	1	25

NYLON SNAP BUSHINGS



FEATURES & BENEFITS

- Protects electrical cables through holes in sheet metal
- Locks into hole firmly with fingertip pressure
- UL approved
- Halogen free.

Code	Description	Packing	MOQ	Ctn
BUSH-M20/S	Snap Bushing - Nylon 20mm Black	50	50	9500
BUSH-M25/S	Snap Bushing - Nylon 25mm Black	50	50	5500
BUSH-M30/S	Snap Bushing - Nylon 30mm Black	50	50	4000
BUSH-M32/S	Snap Bushing - Nylon 32mm Black	50	50	3500
BUSH-M38/S	Snap Bushing - Nylon 38mm Black	20	20	2200
BUSH-M50/S	Snap Bushing - Nylon 50mm Black	20	20	1500

PVC THREADED BUSHINGS



FEATURES & BENEFITS

- Provides protection for electrical cables in sheet metal penetration applications
- High quality PVC material
- Supplied as a kit (Male and Female)
- Locks into penetration firmly with fingertip pressure
- Comprehensive range.

Code	Description	Packing	MOQ	Ctn
BUSH-M20/TH	Threaded Bush PVC 20mm Grey M&F	100	100	1000
BUSH-M25/TH	Threaded Bush PVC 25mm Grey M&F	100	100	1000
BUSH-M32/TH	Threaded Bush PVC 32mm Grey M&F	50	50	400
BUSH-M40/TH	Threaded Bush PVC 40mm Grey M&F	25	25	200
BUSH-M50/TH	Threaded Bush PVC 50mm Grey M&F	25	25	100

CORRUGATED CONDUITS



FEATURES & BENEFITS

- Highly flexible | Heavy duty PVC
- Metre marked – easy measure
- High impact strength | Crush resistant
- Flame retardant | Self-extinguishing
- Extreme UV Resistant.

Code	Description	Packing	MOQ	Ctn
CC-M25/50M-PV	Corrugated Conduit Solar HD - Grey 25mm x 50m	1	1	35/pallet
CC-M25/50M-PV-B	Corrugated Conduit Solar HD - Black 25mm x 50m	1	1	35/pallet

INSTALLATION & CABLE MANAGEMENT

PVC FITTINGS



FEATURES & BENEFITS

- Manufactured according to AS/NZS 2053 Standard
- Stainless steel screws used on all inspection products and junction boxes (tees, elbows and junction boxes)
- Snug fit on conduit tubing
- Heavy duty construction
- Comprehensive range.

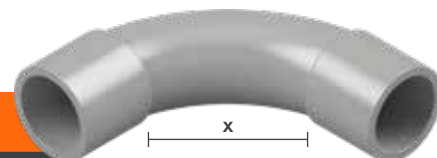
SCREW ADAPTORS

Code	Description	Packing	MOQ	Ctn
ADAP-20G/PS	Screw Adaptor - 20mm - Grey - Plain/Screw	50	50	1000
ADAP-25G/PS	Screw Adaptor - 25mm - Grey - Plain/Screw	50	50	1000
ADAP-32G/PS	Screw Adaptor - 32mm - Grey - Plain/Screw	50	50	500
ADAP-40G/PS	Screw Adaptor - 40mm - Grey - Plain/Screw	20	20	400
ADAP-50G/PS	Screw Adaptor - 50mm - Grey - Plain/Screw	10	10	100



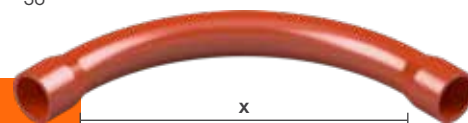
90° STANDARD BENDS

Code	Description	x (mm)	Packing	MOQ	Ctn
BEND-20G/STD	90° Standard Bend - 20mm - Grey	66	50	50	500
BEND-25G/STD	90° Standard Bend - 25mm - Grey	87	20	20	200
BEND-32G/STD	90° Standard Bend - 32mm - Grey	165	10	10	200
BEND-40G/STD	90° Standard Bend - 40mm - Grey	170	1	1	65
BEND-50G/STD	90° Standard Bend - 50mm - Grey	223	1	1	30



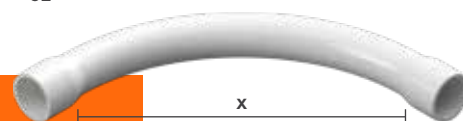
90° SWEEP BENDS

Code	Description	x (mm)	Packing	MOQ	Ctn
BEND-20/SWP	90° Sweep Bend - 20mm - Orange - (HD)	165	1	1	250
BEND-25/SWP	90° Sweep Bend - 25mm - Orange - (HD)	215	1	1	250
BEND-32/SWP	90° Sweep Bend - 32mm - Orange - (HD)	275	1	1	70
BEND-40/SWP	90° Sweep Bend - 40mm - Orange - (HD)	385	1	1	60
BEND-50/SWP	90° Sweep Bend - 50mm - Orange - (HD)	460	1	1	32



90° COMMUNICATION BENDS

Code	Description	x (mm)	Packing	MOQ	Ctn
BEND-25/COMM	Communication Bend 90° PVC 25mm White	215	1	1	250
BEND-32/COMM	Communication Bend 90° PVC 32mm White	275	1	1	70



CONDUIT CLIPS

Code	Description	Packing	MOQ	Ctn
CLIP-20G/PVC	Conduit Clip - 20mm - Grey	100	100	2000
CLIP-25G/PVC	Conduit Clip - 25mm - Grey	100	100	2000
CLIP-32G/PVC	Conduit Clip - 32mm - Grey	50	50	1000

PLAIN COUPLINGS

Code	Description	Packing	MOQ	Ctn
COUP-20G	Plain Coupling - 20mm - Grey	50	50	1000
COUP-25G	Plain Coupling - 25mm - Grey	50	50	1000
COUP-32G	Plain Coupling - 32mm - Grey	20	20	400
COUP-40G	Plain Coupling - 40mm - Grey	1	1	400
COUP-50G	Plain Coupling - 50mm - Grey	1	1	200
COUP-63G	Plain Coupling - 63mm - Grey	1	1	66

PLAIN/SCREW COUPLINGS

Code	Description	Packing	MOQ	Ctn
COUP-20G/PS	Plain/Screw Coupling - 20mm - Grey	50	50	1000
COUP-25G/PS	Plain/Screw Coupling - 25mm - Grey	50	50	1000
COUP-32G/PS	Plain/Screw Coupling - 32mm - Grey	50	50	1000
COUP-40G/PS	Plain/Screw Coupling - 40mm - Grey	5	5	300
COUP-50G/PS	Plain/Screw Coupling - 50mm - Grey	5	5	200

SOLID ELBOWS

Code	Description	Packing	MOQ	Ctn
ELB-20G	Solid Elbow - 20mm - Grey	20	20	400
ELB-25G	Solid Elbow - 25mm - Grey	20	20	400

RIGHT ANGLE ELBOWS

Code	Description	Packing	MOQ	Ctn
ELB-20G/RA	Right Angle Elbow - 20mm - Grey	20	20	800
ELB-25G/RA	Right Angle Elbow - 25mm - Grey	20	20	400

INSPECTIONS ELBOWS

Code	Description	Packing	MOQ	Ctn
ELB-20G/IN	Inspection Elbow - 20mm - Grey	20	20	400
ELB-25G/IN	Inspection Elbow - 25mm - Grey	20	20	400
ELB-32G/IN	Inspection Elbow - 32mm - Grey	10	10	200



INSTALLATION & CABLE
MANAGEMENT

DETECTION, SAFETY
& WARNING

METERING & CONTROL

FASTENERS, INDUSTRIAL
& TOOLING

LIGHTING & SENSORS

INSTALLATION & CABLE MANAGEMENT

LOCATING FLANGES

Code	Description	Packing	MOQ	Ctn
FLAN-20/LOC	Locating Flange - 20mm - Orange	10	10	200
FLAN-25/LOC	Locating Flange - 25mm - Orange	10	10	200
FLAN-32/LOC	Locating Flange - 32mm - Orange	10	10	200



PLASTIC SADDLES

Code	Description	Packing	MOQ	Ctn
FS-20G/PVC	Plastic Saddle - 20mm - Full - Grey	100	100	2000
FS-25G/PVC	Plastic Saddle - 25mm - Full - Grey	100	100	2000
FS-32G/PVC	Plastic Saddle - 32mm - Full - Grey	50	50	1000



CORRUGATED GLANDS

Code	Description	Packing	MOQ	Ctn
GLA-20G/COR	Corrugated Glands - 20mm - Grey	50	50	1000
GLA-25G/COR	Corrugated Glands - 25mm - Grey	50	50	500
GLA-32G/COR	Corrugated Glands - 32mm - Grey	20	20	400



DISPOSABLE LIDS

Code	Description	Packing	MOQ	Ctn
LID-25/DISP	Disposable Lid - Orange	20	20	400



END PLUG - PLAIN

Code	Description	Packing	MOQ	Ctn
PLUG-20G/PVC	Conduit End Plug Plain 20mm Grey	100	100	1000
PLUG-25G/PVC	Conduit End Plug Plain 25mm Grey	100	100	1000



PLAIN REDUCERS

Code	Description	Packing	MOQ	Ctn
RED-20/16G/PL	Plain Reducer - 20/16mm - Grey	50	50	1000
RED-25/20G/PL	Plain Reducer - 25/20mm - Grey	50	50	1000
RED-32/25G/PL	Plain Reducer - 32/25mm - Grey	50	50	1000
RED-40/32G/PL	Plain Reducer - 40/32mm - Grey	20	20	400
RED-50/40G/PL	Plain Reducer - 50/40mm - Grey	20	20	400



STEPPED REDUCERS

Code	Description	Packing	MOQ	Ctn
RED-25/20G/ST	Stepped Reducer 25/20mm Grey	50	50	1000
RED-32/25G/ST	Stepped Reducer 32/25mm Grey	50	50	1000

THREADED REDUCERS

Code	Description	Packing	MOQ	Ctn
RED-25/20G/TH	Threaded Reducer - 25/20mm - Grey	50	50	1000
RED-32/25G/TH	Threaded Reducer - 32/25mm - Grey	50	50	1000
RED-40/32G/TH	Threaded Reducer - 40/32mm - Grey	20	20	400
RED-50/40G/TH	Threaded Reducer - 50/40mm - Grey	20	20	400

EXTENSION RINGS

Code	Description	Packing	MOQ	Ctn
RING-25G/EX	Extension Ring - 25mm - Grey	20	20	200

1-WAY SHALLOW JUNCTION BOXES

Code	Description	Packing	MOQ	Ctn
JBS-20G/1	1 Way Shallow J-Box - 20mm - Grey	10	10	100
JBS-25G/1	1 Way Shallow J-Box - 25mm - Grey	10	10	100

2-WAY STRAIGHT SHALLOW JUNCTION BOXES

Code	Description	Packing	MOQ	Ctn
JBS-20G/2	2 Way Straight Shallow J-Box - 20mm - Grey	10	10	100
JBS-25G/2	2 Way Straight Shallow J-Box - 25mm - Grey	10	10	100

2-WAY ANGLE SHALLOW JUNCTION BOXES

Code	Description	Packing	MOQ	Ctn
JBS-20G/2A	2 Way Angle Shallow J-Box - 20mm - Grey	10	10	100
JBS-25G/2A	2 Way Angle Shallow J-Box - 25mm - Grey	10	10	100



INSTALLATION & CABLE
MANAGEMENT

DETECTION, SAFETY
& WARNING

METERING & CONTROL

FASTENERS, INDUSTRIAL
& TOOLING

LIGHTING & SENSORS

INSTALLATION & CABLE MANAGEMENT

2-WAY 'U' TYPE SHALLOW JUNCTION BOXES

Code	Description	Packing	MOQ	Ctn
JBS-20G/2U	2 Way U Type Shallow J-Box - 20mm - Grey	10	10	100
JBS-25G/2U	2 Way U Type Shallow J-Box - 25mm - Grey	10	10	100



3-WAY SHALLOW JUNCTION BOXES

Code	Description	Packing	MOQ	Ctn
JBS-20G/3	3 Way Shallow J-Box - 20mm - Grey	10	10	100
JBS-25G/3	3 Way Shallow J-Box - 25mm - Grey	10	10	100



3-WAY 'Y' TYPE SHALLOW JUNCTION BOXES

Code	Description	Packing	MOQ	Ctn
JBS-20G/3Y	3 Way Y Type Shallow J-Box - 20mm - Grey	10	10	100
JBS-25G/3Y	3 Way Y Type Shallow J-Box - 25mm - Grey	10	10	100



4-WAY SHALLOW JUNCTION BOXES

Code	Description	Packing	MOQ	Ctn
JBS-20G/4	4 Way Shallow J-Box - 20mm - Grey	10	10	100
JBS-25G/4	4 Way Shallow J-Box - 25mm - Grey	10	10	100



4-WAY 'H' TYPE SHALLOW JUNCTION BOXES

Code	Description	Packing	MOQ	Ctn
JBS-20G/4H	4 Way H Type Shallow J-Box - 20mm - Grey	10	10	100
JBS-25G/4H	4 Way H Type Shallow J-Box - 25mm - Grey	10	10	100



1-WAY DEEP JUNCTION BOXES

Code	Description	Packing	MOQ	Ctn
JBD-20G/1	1 Way Deep J-Box - 20mm - Grey	10	10	100
JBD-25G/1	1 Way Deep J-Box - 25mm - Grey	10	10	100



2-WAY DEEP JUNCTION BOXES

Code	Description	Packing	MOQ	Ctn
JBD-20G/2	2 Way Deep J-Box - 20mm - Grey	10	10	100
JBD-25G/2	2 Way Deep J-Box - 25mm - Grey	10	10	100

2-WAY ANGLE DEEP JUNCTION BOXES

Code	Description	Packing	MOQ	Ctn
JBD-20G/2A	2 Way Angle Deep J-Box - 20mm - Grey	10	10	100
JBD-25G/2A	2 Way Angle Deep J-Box - 25mm - Grey	10	10	100

3-WAY DEEP JUNCTION BOXES

Code	Description	Packing	MOQ	Ctn
JBD-20G/3	3 Way Deep J-Box - 20mm - Grey	10	10	100
JBD-25G/3	3 Way Deep J-Box - 25mm - Grey	10	10	100

3-WAY 'Y' TYPE DEEP JUNCTION BOXES

Code	Description	Packing	MOQ	Ctn
JBD-20G/3Y	3 Way Y Type Deep J-Box - 20mm - Grey	10	10	100
JBD-25G/3Y	3 Way Y Type Deep J-Box - 25mm - Grey	10	10	100

4-WAY DEEP JUNCTION BOXES

Code	Description	Packing	MOQ	Ctn
JBD-20G/4	4 Way Deep J-Box - 20mm - Grey	10	10	100
JBD-25G/4	4 Way Deep J-Box - 25mm - Grey	10	10	100

4-WAY 'H' TYPE DEEP JUNCTION BOXES

Code	Description	Packing	MOQ	Ctn
JBD-20G/4H	4 Way H Type Deep J-Box - 20mm - Grey	10	10	100
JBD-25G/4H	4 Way H Type Deep J-Box - 25mm - Grey	10	10	100



INSTALLATION & CABLE
MANAGEMENT

DETECTION, SAFETY
& WARNING

METERING & CONTROL

FASTENERS, INDUSTRIAL
& TOOLING

LIGHTING & SENSORS

INSTALLATION & CABLE MANAGEMENT

STRAIGHT TEES

Code	Description	Packing	MOQ	Ctn
TEE-20G	Straight Tee - 20mm - Grey	20	20	400
TEE-25G	Straight Tee - 25mm - Grey	20	20	400



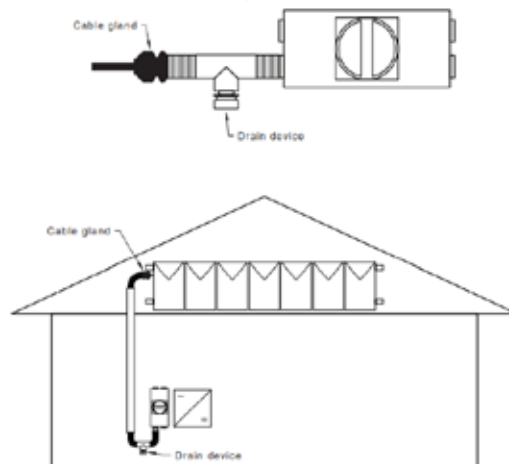
INSPECTION TEES

Code	Description	Packing	MOQ	Ctn
TEE-20G/IN	Inspection Tee - 20mm - Grey	20	20	400
TEE-25G/IN	Inspection Tee - 25mm - Grey	10	10	200
TEE-32G/IN	Inspection Tee - 32mm - Grey	5	5	50



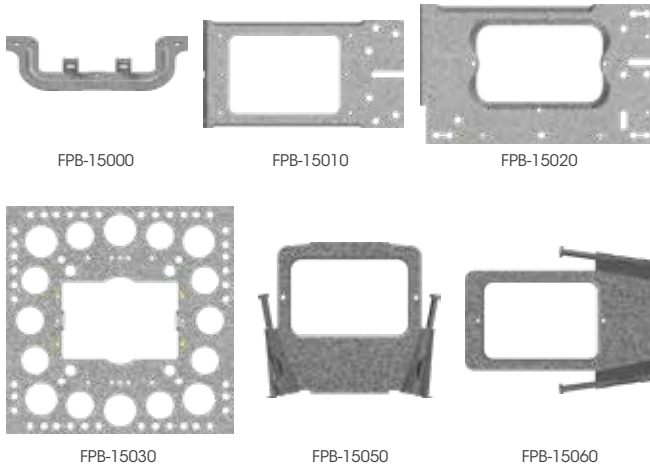
DRAIN TEE - SOLAR APPLICATIONS

Code	Description	Packing	MOQ	Ctn
TEE-25G/DR	Drain Tee - 25mm - Grey	20	20	400



Examples of a device to drain liquid from a conduit system (bottom entry/exit)

MOUNTING BRACKETS

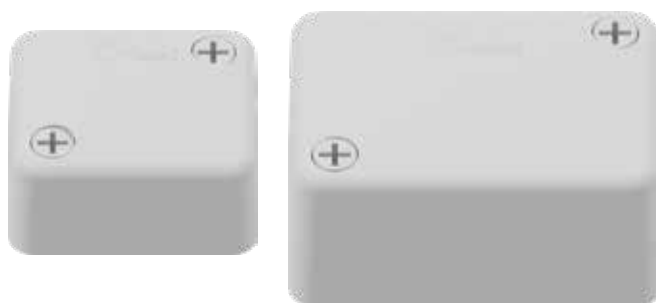


FEATURES & BENEFITS

- Heavy duty construction
- Riveted screw inserts - Don't break free with corrosion (FPB-15030)
- Compatible with all leading brands of bakelite.

Code	Description	Packing	MOQ	Ctn
FPB-15000	Mounting Bracket - C Clip	25	25	500
FPB-15010	Mounting Bracket - Right Angle (Standard)	20	20	200
FPB-15020	Mounting Bracket - Right Angle (Large)	20	20	200
FPB-15030	Mounting Bracket - Square - Render	25	25	200
FPB-15050	Stud Bracket - Vertical Pre-Nailed	20	20	160
FPB-15060	Stud Bracket - Horizontal Pre-Nailed (Light Point)	20	20	200

JUNCTION BOXES



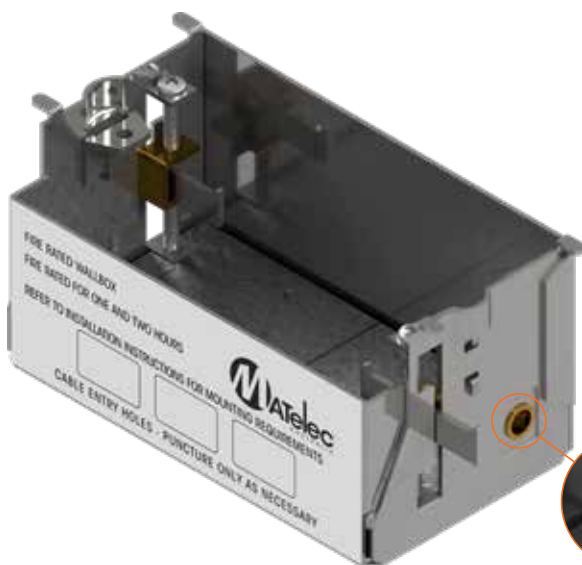
FEATURES & BENEFITS

- Excellent finish and fit
- Includes 3x single screw connectors and 1x double screw cable connector.

Code	Description	Packing	MOQ	Ctn
FJB-10000	Junction Box - Standard	10	10	100
FJB-20000	Junction Box - Large	10	10	100

INSTALLATION & CABLE MANAGEMENT

WALL BOX – FIRE RATED



Brass earth connector

FEATURES & BENEFITS

- Designed for mounting switches and outlets in walls that have a specified fire rating
- Fully compliant to Australian Standards AS1530.4-2015
- Warringtonfire Aust Pty Ltd certificates available on request - Certificate no. FAS220106
- Fire rating of FRL -/120/120 (2 hours fire resistance) for back to back, side to side and above & below configurations
- Acoustic rating AS 1191 and AS/NZS ISO 717-1
- Supplied complete with intumescent pads and acoustic seal
- Cable entry holes - 3 in top, 2 knockouts in back
- Complete with integral 'wall box earthing' and 'earth cabling termination' connector
- Must be used with an approved Fire Rated sealant.

Code	Description	Packing	MOQ	Ctn
FWB-90000	Wall Box - Fire Rated	10	10	100

UNDERGROUND WARNING TAPE

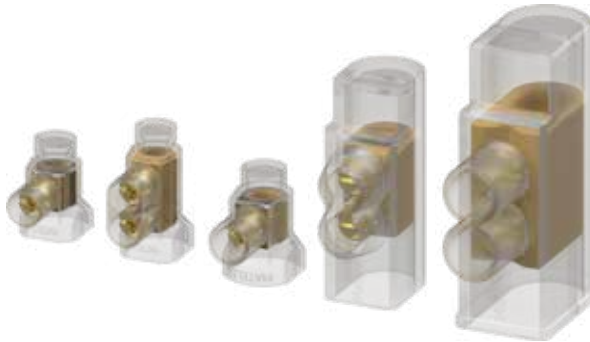


FEATURES & BENEFITS

- High quality material
- Environmentally safe
- Acid and alkaline resistant
- Excellent tear resistance.

Code	Description	Packing	MOQ	Ctn
TAPE-WARN/100	Underground Warning Tape - 100m Electrical Orange	1	1	6
TAPE-WARN/500	Underground Warning Tape - 500m Electrical Orange	1	1	2
TAPE-WARN/100-C	Underground Warning Tape - 100m Comms White	1	1	6
TAPE-WARN/500-C	Underground Warning Tape - 500m Comms White	1	1	2

INSULATED CABLE CONNECTORS



FEATURES & BENEFITS

- Tapered cable entry
- Deep flat/slotted screw heads, enabling tight positive connection
- Soft, pliable material
- Now with innovative, reusable, 'trade friendly' packaging.

Code	Description	Amp Rating	Packing	MOQ	Ctn
SC1-2X6/100	2 x 6mm ² Single Screw Connector	32 Amp	100/Pack	1 Pack	18
SC1-2X6/500	2 x 6mm ² Single Screw Connector	32 Amp	500/Pack	1 Pack	4
SC1-3X6/50	3 x 6mm ² Single Screw Connector	40 Amp	50/Pack	1 Pack	18
SC2-2X6/50	2 x 6mm ² Double Screw Connector	32 Amp	50/Pack	1 Pack	18
SC2-2X6/300	2 x 6mm ² Double Screw Connector	32 Amp	300/Pack	1 Pack	4
SC2-3X6/50	3 x 6mm ² Double Screw Connector	40 Amp	50/Pack	1 Pack	18
SC2-2X16	2 x 16mm ² Double Screw Connector	63 Amp	20/Pack	1 Pack	360
SC2-2X35	2 x 35mm ² Double Screw Connector	80 Amp	10/Pack	1 Pack	180

IP68 WATERPROOF CABLE CONNECTORS



FEATURES & BENEFITS

- Temperature rating: -40°C to +125°C. Able to withstand a wide range of extreme environments
- Reusable and accessible
- 3 and 5 pole variants - Accommodates a wide range of cable sizes
- Low Smoke / Halogen Free material

Code	Description	Packing	MOQ	Ctn
FCN-16245	IP68 Waterproof Cable Connector - 3 Pole 32 Amp	1	1	10
FCN-16250	IP68 Waterproof Cable Connector - 5 Pole 32 Amp	1	1	10

INSTALLATION & CABLE
MANAGEMENT

DETECTION, SAFETY
& WARNING

METERING & CONTROL

FASTENERS, INDUSTRIAL
& TOOLING

LIGHTING & SENSORS

INSTALLATION & CABLE MANAGEMENT

STRIP CONNECTORS



FEATURES & BENEFITS

- 12 pole / 2 way
- Flexible and pliable material
- Flat head screws.

Code	Description	Amp Rating	Packing	MOQ	Ctn
STC-M4/3A	4mm ² - Natural	3 Amp	10	10	1000
STC-M6/5A	6mm ² - Natural	5 Amp	10	10	800
STC-M10/10A	10mm ² - Natural	10 Amp	10	10	400
STC-M12/15A	12mm ² - Natural	15 Amp	8	8	480
STC-M14/20A	14mm ² - Natural	20 Amp	10	10	400
STC-M16/30A	16mm ² - Natural	30 Amp	6	6	360
STC-M25/60A	25mm ² - Natural	60 Amp	10	10	200

TELSTRA ROPE



FEATURES & BENEFITS

- 602kg break strength
- UV stabilised
- Tangle free uncoiling end to end
- Independently tested by NATA certified laboratories.

Code	Description	Packing	MOQ	Ctn
ROPE-M6/400M-BY	Telstra Rope 6mm x 400m	1	1	72/pallet

PULL LINE ROPE



FEATURES & BENEFITS

- 90kg breaking force
- Abrasion resistant
- Stronger than PE mono
- Independently tested by NATA certified laboratories.

Code	Description	Packing	MOQ	Ctn
ROPE-M3/1000M-OR	Pull Line Rope 3mm x 1000m	1	1	64/pallet

JACK CHAIN



FEATURES & BENEFITS

- Single link
- Weldless twisted links
- Packaged in heavy duty buckets for easy handling.

Code	Description	Packing	MOQ	Ctn
JC-25M/ZP	Single Link Bucket - 25m Zinc	1 Bucket	1 Bucket	4
JC-25M/SS	Single Link Bucket - 25m 304 Stainless Steel	1 Bucket	1 Bucket	4

INSTALLATION & CABLE MANAGEMENT

CATENARY WIRE



FEATURES & BENEFITS

- Highly robust poly reels
- Reels supplied in outer box for ease of storage and transportation
- Full range of accessories available
- Galvanised for durability.

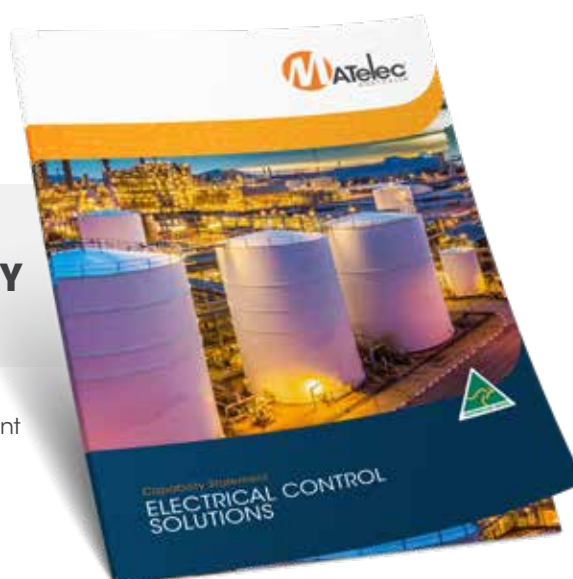
Code	Description	Packing	MOQ	Ctn
FCW-12001	Catenary Wire - 0.90 G 7 Strand - 180m Drum	1	1	150/pallet
FCW-12005	Catenary Wire - 1.25 G 7 Strand - 100m Drum	1	1	150/pallet

SCAN QR CODE TO DOWNLOAD



ELECTRICAL CONTROL SOLUTIONS CAPABILITY STATEMENT

Looking for more information on what we can do?
Visit our website to download our Capability Statement
or contact our Customer Care team at
customer@matelecaustralia.com.au



CATENARY WIRE ACCESSORIES



FEATURES & BENEFITS

- Heavy duty construction
- Zinc-plated coating
- Comprehensive range
- Compatible with all leading brands of Catenary Wire.

THIMBLE

Code	Description	Packing	MOQ	Ctn
CWA-M6/TH	Thimble - 6mm	10	10	500



TURNBUCKLES

Code	Description	Packing	MOQ	Ctn
CWA-M6/TB	Turnbuckles - 6mm Hook & Eye	10	10	250
CWA-M8/TB	Turnbuckles - 8mm Hook & Eye	10	10	200



'D' SHACKLES

Code	Description	Packing	MOQ	Ctn
CWA-M6/DS	D Shackles - 6mm	10	10	750



WIRE ROPE GRIPS

Code	Description	Packing	MOQ	Ctn
CWA-M6/WRG	Wire Rope Grips - 6mm	20	20	1500
CWA-M8/WRG	Wire Rope Grips - 8mm	10	10	600



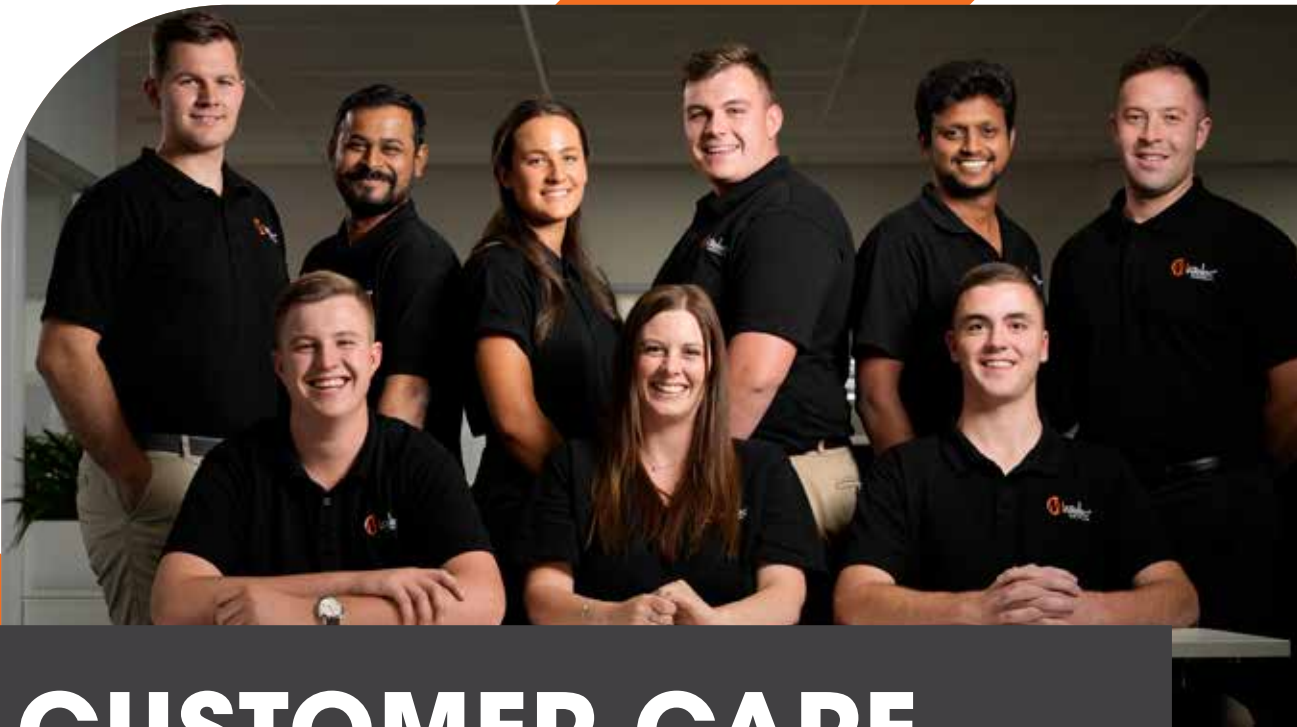
INSTALLATION & CABLE
MANAGEMENT

DETECTION, SAFETY
& WARNING

METERING & CONTROL

FASTENERS, INDUSTRIAL
& TOOLING

LIGHTING & SENSORS



CUSTOMER CARE

Our Customer-First Mentality

Our Customer Care team's number one goal is to live by our core value; Happy People are our Future.

This isn't merely a framed poster on the walls of our offices, but something we strive for with all who partner with MATElec Australia.



**HERE
TO SUPPORT**

Our Australian-based Customer Care Team is invested in delivering what you need, when you need it. Whether it be sales support, product availability, order tracking or anything else, you can be sure that if they don't know the answer – they will source and resolve it as soon as possible.

Our team are ready and available to answer your enquiry Monday to Friday 8am – 5pm AEST, and you can reach them via 1800 281 282, customer@matelecaustralia.com.au, or even scan the QR code to Contact Us via our website.

“At the end of the day – your success is our success”



**TRAINED
TO SUPPORT**

With our commitment to one-call resolution, our team understand that you and your customers are looking to resolve the situation as quickly as possible.

As such, our team have been trained and resourced to resolve and escalate to a specialist, if need be, to ensure that we do everything possible to provide you a solution in a single call.

With a team of electricians and engineers on hand to support your enquiry, you will have a resolution as quickly as possible.

No matter the enquiry from pricing, ordering, installation support, troubleshooting, to warranty claims, we have the team ready to assist. Learn more about our Customer Care team using the QR code.



SUPPORT YOURSELF

To coincide with our expanding product range, we are committed to constantly growing our library of product support materials to ensure you have the resources you need to learn at your own pace and/or at the time of need.

From Product manuals, quick-start and installation guides, how-to and product insight videos, we have you covered.

Make sure to check back into our website via the QR code to see the tools that are available to support you and your customers.



“Our Customer Care team are here to help”



IMMEDIATE SUPPORT

We understand that sometimes not everything works as it should. At MATElec Australia, we are committed to supporting you through this process where required.

Our team are empowered to ensure you have access to replacement equipment, should the equipment be deemed faulty and will work tirelessly with all parties involved, to ensure quick turnaround and limited disruption to your business.

For further information on our warranty process, visit our resource page via the QR code.

INSTALLATION & CABLE
MANAGEMENT

DETECTION, SAFETY
& WARNING

METERING & CONTROL

FASTENERS, INDUSTRIAL
& TOOLING

LIGHTING & SENSORS



DETECTION, SAFETY AND WARNING

PHOTOELECTRIC SMOKE ALARM - 240V



FEATURES & BENEFITS

- Interconnectable with up to 20 units
- Energizer 9V battery included
- Separate hush/test button
- Hinged detachable base - easy push button open
- 'No Battery', 'No Close' feature
- Loop terminal provided
- Mounting holes line up with standard plaster brackets
- Base recessed for mains cabling - no need for large ceiling cut-away
- LED indicators
- 'Low Battery' audible warning
- 7 year warranty
- Improved resilience to EMI interference.

Code	Description	Packing	MOQ	Ctn
FSA-26000	Photoelectric Smoke Detector - 240V	1	1	50

PHOTOELECTRIC SMOKE ALARM - WIRELESS 10YR LITHIUM BATTERY



WIRELESS

FEATURES & BENEFITS

- Discrete slimline appearance
- Wireless interconnect up to 40 units
- Simple pairing process
- Wireless distance up to 100m clear line of sight
- 3V DC non-replaceable 10 yr lithium battery
- No hard wiring - Very simple installation
- Large, easy to use test/hush button
- Easy to mount twist-on base design
- Vermin resistant
- 7 Year Warranty
- Interconnectable with FSA-60000 via FSA-50000 module, providing a complete hardwired and wireless install package (max of 24x combined FSA-30000 & FSA-60000 units interconnectable)
- Compatible with FSA-90000 remote controller.

Code	Description	Packing	MOQ	Ctn
FSA-30000	Photoelectric Smoke Detector - Wireless 10 Year Lithium Battery	1	1	40

INSTALLATION & CABLE
MANAGEMENT

DETECTION, SAFETY
& WARNING

METERING & CONTROL

FASTENERS, INDUSTRIAL
& TOOLING

LIGHTING & SENSORS

DETECTION, SAFETY AND WARNING

PHOTOELECTRIC SMOKE ALARM - 240V 10YR LITHIUM BATTERY



FSA-50000



NOTE: When using the FSA-50000 to wirelessly connect 2 or more FSA-60000 alarms, please disconnect any interconnecting cable.

FEATURES & BENEFITS

- Discrete slimline appearance
- Premium quality and design
- Interconnectable with up to 24 units (wired 150m max, wireless 60m max)
- Compatible with FSA-50000 Wireless Interconnect Module, for wireless interconnection with FSA-30000
- 3V DC 10 year lithium battery
- Separate hush/test button
- Hinged detachable base - easy push button open
- 'No Battery', 'No Close' feature
- Loop terminal provided
- Mounting holes line up with standard plaster brackets
- Base recessed for mains cabling - no need for large ceiling cut-away
- LED indicators
- 'Low Battery' audible warning
- 7 Year Warranty
- Improved resilience to EMI interference
- Compatible with FSA-90000 remote controller.

Code	Description	Packing	MOQ	Ctn
FSA-60000	Photoelectric Smoke Detector - 240V 10 Year Lithium Battery	1	1	30
BAT-3V/10Y	3V 10yr Lithium Battery (CR17450) for FSA-60000 Smoke Detector	-	1	100

SMOKE ALARM WIRELESS INTERCONNECT MODULE



WIRELESS

FEATURES & BENEFITS

- Compatible with FSA-60000, for wireless interconnection with FSA-30000, providing a complete hardwired and wireless install package (max of 24x combined FSA-30000 & FSA-60000 units interconnectable)
- Discrete recessed appearance when installed
- 7 year warranty.

Code	Description	Packing	MOQ	Ctn
FSA-50000	Smoke Detector Wireless Interconnect Module	1	1	20

SMOKE ALARM REMOTE CONTROLLER



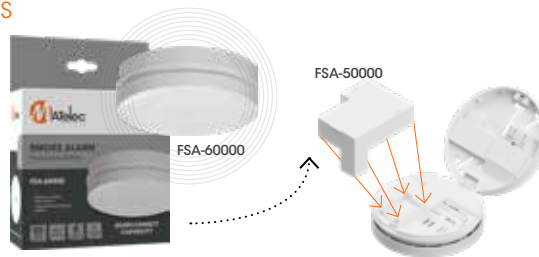
COMPLETE WITH
SAFETY SCREW
ON BATTERY
COMPARTMENT

WIRELESS

FEATURES & BENEFITS

- Wirelessly connect to both FSA-30000 and FSA-60000
- Effortlessly test and hush smoke alarms
- Quickly identify which alarm may be false alarming
- Operating distance of 5m recommended from nearest alarm
- SOS 'Panic' feature designed to raise an alarm in the event of an emergency
- 1 year warranty (excluding battery)
- Complies with AS/NZS 4268.

NOTE: For FSA-90000 to connect to FSA-60000, the FSA-50000 wireless module must be installed in the FSA-60000.



Code	Description	Packing	MOQ	Ctn
FSA-90000	Smoke Detector Remote Controller	1	1	50

SMOKE ALARM ADAPTOR BASE PLATE - SUITS FSA-60000



FEATURES & BENEFITS

- Increases base diameter to 160mm to assist with retrofits of existing larger holes
- Aesthetically pleasing covering solution for differing paint zones
- Mounting holes line up with other leading brandings alarms allowing easy swap-over.
- User-friendly twist-in design.

Code	Description	Packing	MOQ	Ctn
FSA-60000-BP	Smoke Detector Adaptor Plate (Suits FSA-60000)	1	1	100

INSTALLATION & CABLE
MANAGEMENT

DETECTION, SAFETY
& WARNING

METERING & CONTROL

FASTENERS, INDUSTRIAL
& TOOLING

LIGHTING & SENSORS

DETECTION, SAFETY AND WARNING

ALARMS/BUZZERS



FAL-10018

COM-30098

COM-14011

COM-14010

FEATURES & BENEFITS

- Compact and robust
- UV protected
- Heavy duty for industrial applications.

Code	Description	Decibels	Packing	MOQ	Ctn
FAL-10018	Screamer - 12V Indoor	108dB	1	1	100
COM-30098	Buzzer - 12/24Vdc Panel / Ring Lock mount	80dB	1	1	200
COM-14010	Bell - Red Electronic	85dB	1	1	1
COM-14011	Bell - Large Red Electronic	85dB	1	1	1

STROBES



FAL-10001

FAL-10011

FAL-10012-R & FAL-10013

FAL-10009, FAL-10014

FAL-10048

FEATURES & BENEFITS

- Compact and robust
- UV protected
- Xenon lamp - highly effective
- LED technology (FAL-10012)
- Strobe guard suits up to 110mm Ø x 85mm (H) strobes.

Code	Description	Packing	MOQ	Ctn
FAL-10011	Mini Strobe - 12Vdc Circular - Blue	1	1	100
FAL-10012-R	Mini Strobe - 24/12Vac/dc Circular - Red	1	1	100
FAL-10013	Mini Strobe - 240Vac Circular - Red - 0.012A and 2.64W	1	1	100
FAL-10009	Mini Strobe - 12Vdc Rectangular - Red	1	1	200
FAL-10014	Mini Strobe - 24Vdc Rectangular - Red	1	1	200
FAL-10001	Micro Strobe - Circular 12/24Vdc - Red	1	1	50
FAL-10048	Strobe Guard - Powdercoated	1	1	50
FAL-10049	Strobe Guard - Stainless Steel	1	1	50

STANDARD LIQUID LEVEL ALARMS



FEATURES & BENEFITS

- Provides warning indication and alarm when a water storage tank is either empty or full
- Housed in a robust polycarbonate or powder coated metal enclosure
- Audible alarms
- Keypad interface with status indicator lights and alarm mute button.

Code	Description	Enclosure Size
FPC-12650	Liquid Level Alarm - Standard	125x90x60mm

DELUXE LIQUID LEVEL ALARMS



FEATURES & BENEFITS

- Provides warning indication and alarm when a water storage tank is either empty or full
- Housed in a robust polycarbonate or powder coated metal enclosure
- Audible and visual alarms
- Keypad interface with status indicator lights and alarm mute button.

Code	Description	Enclosure Size
FPC-12651	Level Alarm - Deluxe	175x130x80mm
FPC-12651-FS	Level Alarm - Deluxe - With Hard Wired Float Switch	175x130x80mm
FPC-12651-QP	Level Alarm - Deluxe - With Quick Plug Float Switch	175x130x80mm
FPC-12663	Level Alarm - Deluxe - 12Vdc	175x130x80mm
FPC-12670	Level Alarm - Deluxe - Metal Enclosure	300x200x150mm

DETECTION, SAFETY AND WARNING

FLUSH MOUNT LIQUID LEVEL ALARMS



FEATURES & BENEFITS

- Provides warning indication and alarm when a water storage tank is either empty or full
- Housed in a wall plate style panel
- Audible alarm and a keypad interface with status indicator lights and alarm mute button.

Code	Description	Enclosure Size
FPC-12656	Liquid Level Alarm - Flush Mount	175x130x80mm

LIQUID LEVEL ALARM WITH SMS



ME-Link IoT/SMS Module

FEATURES & BENEFITS

- Liquid Level Alarm with SMS features via ME-Link module
- ME-Link is a cellular CAT-M1 remote monitoring and control device utilising the 700Mhz frequency for 'best in class' signal strength.
- Reports status information and alarms from the Liquid Level Alarm and any additional digital inputs
- ME-Link Module can be utilised to control external devices with the two onboard relay outputs
- Easy to set up SMS commands are used to configure the operation and alarms without the need for any additional software.

Code	Description	Enclosure Size
FPC-12651-SMS	Liquid Level Alarm - with SMS	300x300x150mm

LIQUID LEVEL & POWER FAILURE ALARM WITH BATTERY BACKUP



FEATURES & BENEFITS

- Provides warning indication and alarm when a water storage tank is either empty or full
- Housed in a robust polycarbonate enclosure
- Audible and visual alarms
- Keypad interface with status indicator lights and alarm mute button
- Built-in battery and charger and activates the alarm on mains power failure.

Code	Description	Enclosure Size
FPC-12657	Liquid Level & Power Failure Alarm - Battery Backup	240x190x95mm

SOLAR POWERED LIQUID LEVEL ALARM



FEATURES & BENEFITS

- Provides warning indication and alarm when a water storage tank is either empty or full
- Housed in a robust powder coated metal enclosure
- Audible and visual alarms
- Keypad interface with status indicator lights and alarm mute button
- Solar panel for power supply in applications where mains power is unavailable.

Code	Description	Enclosure Size
FPC-12658	Liquid Level Alarm - Solar Powered	300x300x200mm

DETECTION, SAFETY AND WARNING

HIGH & LOW LEVEL LIQUID LEVEL ALARM



FEATURES & BENEFITS

- Provides warning indication and alarm when a water storage tank is both empty and full
- Housed in a robust powder coated metal enclosure
- Audible and visual alarms
- Status indicator lights and an alarm mute button.

Code	Description	Enclosure Size
FPC-12664	Liquid Level Alarm - High & Low Level	300x200x150mm

LIQUID LEVEL ALARM WITH CONDUCTIVITY RELAY



FEATURES & BENEFITS

- Provides Warning indication and alarm when a water storage tank is either empty or full
- Housed in a robust powder coated metal enclosure
- Audible and visual alarms
- Keypad interface providing status indication and easy alarm muting
- Conductivity relay and inputs for conductivity sensing probes
- Ideal for lift well moisture sensing and other applications.

Code	Description	Enclosure Size
FPC-12665	Liquid Level Alarm - With Conductivity Relay	300x200x150mm

AUTO PUMP CONNECTION HIGH LEVEL ALARMS



FEATURES & BENEFITS

- Provides warning indication and alarm when a water storage tank is full
- Housed in a robust polycarbonate or powder coated metal enclosure
- Audible and visual alarms
- Keypad interface with status indicator lights and alarm mute button
- Includes a 9006 Float Switch with quick plug connection and a GPO for power supply to an automatic pump

Code	Description	Enclosure Size
FPC-12654	High Level Alarm - Auto Pump Connection	200x160x95mm
FPC-12672	High Level Alarm - Auto Pump Connection - Metal Enclosure	300x200x150mm

VALVE SHUT-OFF HIGH-LEVEL ALARMS



FEATURES & BENEFITS

- Suitable for applications where the water being discharged from an ablation is required to be pumped away
- When the first float switch closes, the alarms will activate to warn of rising level in the tank/pit
- If the water level continues to rise and the second float switch closes, the alarms will activate and the controller will pulse close the valve, ensuring no further mains water is used, to prevent the level in the outfall tank from rising further
- In the event of power failure, the valve is immediately closed.

Code	Description	Enclosure Size
FPC-12675	High Level Alarm - Valve Shut-Off	200x160x95mm
FPC-12676	High Level Alarm - Valve Shut-Off - Metal Enclosure	300x200x150mm



METERING & CONTROL

KWH METER - DIN RAIL MOUNT - SINGLE PHASE



**SOLAR
APPROVED**



FEATURES & BENEFITS

- Slimline design
- NMI approved for billing applications
- Digital LCD display
- Tamper seal kit supplied
- 1 year warranty
- **Suitable for solar applications.**

Report/Certification Number	Date Issued
National Measurement Institute CoA NMI 14/2/126	27/08/2024
NMI M 6-1 Electricity Meters Part 1: Metrological and technical requirements Ref PA-2023/093	26/03/2024
SGS-CSTC Standards Technical Services (Shanghai) Co. Ltd. test report reference no. SHES231202383101 (NMI M 6-1)	06/02/2024

Code	Description	Packing	MOQ	Ctn
FKW-15130/NMI	KWH Meter - Single Phase Din Rail Mount - NMI Approved - Solar Compatible	1	1	90

KWH METER - DIN RAIL MOUNT - THREE PHASE



**NMI
APPROVED**



FEATURES & BENEFITS

- NMI approved for billing applications
- Digital LCD display
- Polyphase - Suitable for 1, 2 and 3 phase metering
- Tamper seal kit available
- 1 year warranty
- Note - Not suitable for solar applications.

Report/Certification Number	Date Issued
SGS Test Report Reference No. SHE5190301218301	5/5/2019
National Measurement Institute (NMI) 14/2/107	10/7/2019
IEC Test Report IEC 62053-21:2003, IEC62052-11:2003	12/12/2014

Code	Description	Packing	MOQ	Ctn
FKW-15120/NMI	KWH Meter - Din Rail Mount - Direct Electronic 0-100A - Three Phase - NMI Approved	1	1	30

INSTALLATION & CABLE
MANAGEMENT

DETECTION, SAFETY
& WARNING

METERING & CONTROL

FASTENERS, INDUSTRIAL
& TOOLING

LIGHTING & SENSORS

METERING & CONTROL

KWH METER - DIN RAIL MOUNT - SINGLE PHASE NMI RS485



NMI
APPROVED



FEATURES & BENEFITS

- Class 1 accuracy
- LCD display
- 63A direct connect
- RS485 Modbus output
- Energy pulse output
- Compact: 2 DIN modules wide.

Code	Description	Packing	MOQ	Ctn
FKW-11000-1	KWH Meter - Din Rail Mount - NMI Approved - Single Phase	1	1	10

KWH METER - DIN RAIL MOUNT - SINGLE PHASE



FEATURES & BENEFITS

- For single phase direct metering
- Super compact slimline design
- 1 year warranty
- Note - Not suitable for solar applications.

Code	Description	Packing	MOQ	Ctn
FKW-10000	KWH Meter - Din Rail Mount - Direct Electronic 0-50A - Single Phase	1	1	10

KWH METER - SURFACE MOUNT - SINGLE PHASE



FEATURES & BENEFITS

- Heavy duty design
- For single phase direct metering
- Suitable for industrial properties and industrial equipment metering
- 1 year warranty
- Note - Not suitable for solar applications.

Code	Description	Packing	MOQ	Ctn
FKW-18110	KWH Meter - Surface Mount - Direct Electronic 0-100A - Single Phase	1	1	20

KWH METER - SURFACE MOUNT - THREE PHASE



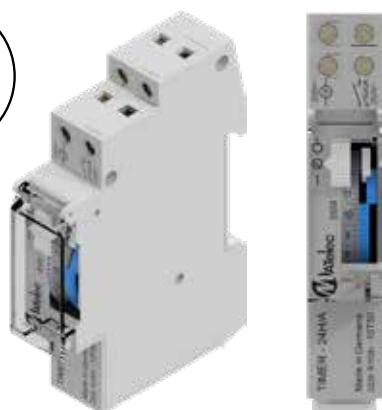
FEATURES & BENEFITS

- Heavy duty design
- For three phase direct metering
- Polyphase - Suitable for 1, 2 and 3 phase metering
- Suitable for industrial properties and industrial equipment metering
- 1 year warranty
- Note - Not suitable for solar applications.

Code	Description	Packing	MOQ	Ctn
FKW-18120	KWH Meter - Surface Mount - Direct Electronic 0-100A - Three Phase	1	1	10

METERING & CONTROL

TIME SWITCH - DIN RAIL MOUNT - ANALOGUE 24HR



FEATURES & BENEFITS

- Simple programming functionality
- Quartz oscillator providing precise time control
- Compact slimline design
- Transparent display flap for added protection
- Manual override feature
- Lithium back-up battery
- 2 year warranty.

Code	Description	Packing	MOQ	Ctn
TIMER-24H/A	Time Switch - Din Rail Mount - Analogue - 24 Hour - 240V	1	1	120

TIME SWITCH - DIN RAIL MOUNT - 7 DAY PROGRAMMABLE



**SPARE LITHIUM
BATTERY
INCLUDED**



FEATURES & BENEFITS

- Simple programming functionality
- Compact slimline design
- Transparent display flap for added protection
- Manual override feature
- Lithium back-up battery
- 1 year warranty.

Code	Description	Packing	MOQ	Ctn
TIMER-7D/D-240V	Time Switch - Din Rail Mount - 7 Day Programmable - 240Vac	1	1	100
TIMER-7D/D-24V	Time Switch - Din Rail Mount - 7 Day Programmable - 24Vac/dc	1	1	100
TIMER-7D/D-12V	Time Switch - Din Rail Mount - 7 Day Programmable - 12Vac/dc	1	1	100

TIME SWITCH - DIN RAIL MOUNT - LCD 24x7 PROGRAMMABLE



FEATURES & BENEFITS

- 7 different programs, one for each day of the week
- 4 year lithium backup battery (replaceable) for maintaining the date and time without mains power
- Low battery indicator
- Manual override (temporary or permanent)
- Backlit LCD with auto power off
- Compact slimline design
- 5 year warranty.

Code	Description	Packing	MOQ	Ctn
TIMER-D10	Time Switch Slimline LCD 1 R/O Programmable 24x7 - 240Vac	1	1	80

TIME SWITCH - DIN RAIL MOUNT - BLUETOOTH PROGRAMMABLE



FEATURES & BENEFITS

- IOS & Android app compatibility via Bluetooth
- Backlit LCD
- Din rail mount
- 1 & 2x relay output
- Lithium back up battery.



Code	Description	Packing	MOQ	Ctn
TIMER-D10BT	Time Switch LCD 1 Channel R/O Bluetooth Programmable	1	1	40
TIMER-D20BT	Time Switch LCD 2 Channel R/O Bluetooth Programmable	1	1	40

INSTALLATION & CABLE
MANAGEMENT

DETECTION, SAFETY
& WARNING

METERING & CONTROL

FASTENERS, INDUSTRIAL
& TOOLING

LIGHTING & SENSORS

METERING & CONTROL

MODULAR CONTACTORS - DIN RAIL MOUNT

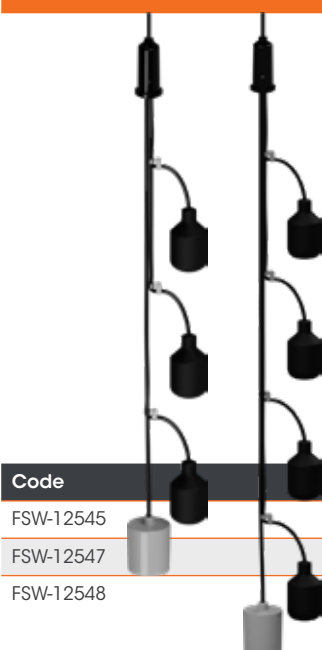


FEATURES & BENEFITS

- Compact and modular
- Quiet operation
- For control of power circuits including:
 - » lighting
 - » motors
 - » fans
 - » heating
 - » ventilation
 - » pumps
 - » home automation
- Ideal for remote switching
- Comprehensive range
- 2 year warranty.

Code	Description	Packing	MOQ	Ctn
CON-25A/1NO1NC	Modular Contactor 240Vac 25A 1NO+1NC	1	1	120
CON-25A/2NO	Modular Contactor 240Vac 25A 2NO	1	1	120
CON-25A/2NO2NC	Modular Contactor 240Vac 25A 2NO+2NC	1	1	50
CON-25A/4NO	Modular Contactor 240Vac 25A 4NO	1	1	50
CON-40A/2NO2NC	Modular Contactor 240Vac 40A 2NO+2NC	1	1	40
CON-40A/4NO	Modular Contactor 240Vac 40A 4NO	1	1	40
CON-63A/2NO2NC	Modular Contactor 240Vac 63A 2NO+2NC	1	1	40
CON-63A/4NO	Modular Contactor 240Vac 63A 4NO	1	1	40
CON-AUX/1NO1NC	Auxiliary Contactor 240Vac 6A 1NO+1NC	1	1	120

3 & 4 FLOAT MULTI LEVEL FLOAT TREES



FEATURES & BENEFITS

- Resin filled/potted connection - Fully submersible
- Horizontal pivot point for switching accuracy and consistency
- Weighted - Obviating flow induced travel No more tangled floats
- No more setting up with conduits and ties
- No more trying to pull multiple float wires through undersized conduit
- No more trying to decipher which wires relate to which floats.

Code	Description	Cable Length	Packing	MOQ	Ctn
FSW-12545	Multi Level Float Tree - 3 Float	10m	1	1	8
FSW-12547	Multi Level Float Tree - 3 Float	20m	1	1	5
FSW-12548	Multi Level Float Tree - 4 Float	20m	1	1	5

9004 OIL AND CHEMICAL-RESISTANT NRB FLOAT SWITCHES



FEATURES & BENEFITS

- Smooth, robust polypropylene switch housing reduces adhesion of foreign materials
- 'Sliding detent action' obviates wave induced oscillation, maintaining consistency in switching level accuracy
- Higher current rating of up to 10 Amps is ideal for heavier duty applications
- Nitrile Rubber Blend

Code	Description	Cable Length	Packing	MOQ	Ctn
FSW-12407	9004 NRB N/O Float Switch	1.5m	1	1	40
FSW-12409	9004 NRB N/O Float Switch	6m	1	1	20
FSW-12410	9004 NRB N/O Float Switch	10m	1	1	15
FSW-12411	9004 NRB N/O Float Switch	15m	1	1	10
FSW-12412	9004 NRB N/O Float Switch	20m	1	1	10
FSW-12413	9004 NRB N/O Float Switch	30m	1	1	6
FSW-12414	9004 NRB N/O Float Switch	40m	1	1	5
FSW-12415	9004 NRB N/O Float Switch	50m	1	1	4

9006 HIGH PRECISION REPEATABILITY NRB FLOAT SWITCHES



FEATURES & BENEFITS

- Smooth, robust ABS switch housing reduces adhesion of foreign materials
- 'Sliding detent action' obviates wave induced oscillation, maintaining consistency in switching level accuracy
- Nitrile Rubber Blend
- Ideal for confined spaces.

Code	Description	Cable Length	Packing	MOQ	Ctn
FSW-12528	9006 NRB Float Switch	2.5m	1	1	25
FSW-12529	9006 NRB Float Switch	6m	1	1	20
FSW-12530	9006 NRB Float Switch	10m	1	1	14
FSW-12531	9006 NRB Float Switch	15m	1	1	10
FSW-12532	9006 NRB Float Switch	20m	1	1	9
FSW-12533	9006 NRB Float Switch	30m	1	1	6
FSW-12534	9006 NRB Float Switch	40m	1	1	5
FSW-12539	*Special Order* CR & DC Plug Onga Float Switch	10m	1	1	20
FSW-12540	CR & DC Plug PVC Float Switch	10m	1	1	20
FSW-12551	9006 NRB Float Switch	50m	1	1	4

METERING & CONTROL

9010 HIGH BUOYANCY SEWAGE RATED NRB FLOAT SWITCHES



FSW-90070
Additional Cable
Weight available

FEATURES & BENEFITS

- Smooth, robust ABS switch housing reduces adhesion of foreign materials
- 'Sliding detent action' obviates wave induced oscillation, maintaining consistency in switching level accuracy.
- Nitrile Rubber Blend
- Excellent buoyancy.

Code	Description	Cable Length	Packing	MOQ	Ctn
FSW-12517	9010 NRB Float Switch	10m	1	1	10
FSW-12518	9010 NRB Float Switch	15m	1	1	10
FSW-12519	9010 NRB Float Switch	20m	1	1	10
FSW-12520	9010 NRB Float Switch	30m	1	1	5
FSW-12521	9010 NRB Float Switch	40m	1	1	5
FSW-90070	Float Switch Cable Weight - Adjustable	-	1	1	-

9011 HIGH HEAT FLOAT SWITCHES



FEATURES & BENEFITS

- SUS304 Stainless steel switch housing makes the 9011 High Heat Float Switch ideal for high temperature applications
- Mechanically activated, snap action contact with wide switching angle
- Epoxy resin treatment to prevent water ingress into the float, providing excellent waterproof capability and extended life
- Includes cable weight for easy installation.

Code	Description	Cable Length	Packing	MOQ	Ctn
FSW-12580	9011 SRB High Heat Float Switch	5m	1	1	1

MAGNETIC HORIZONTAL FLOAT SWITCHES

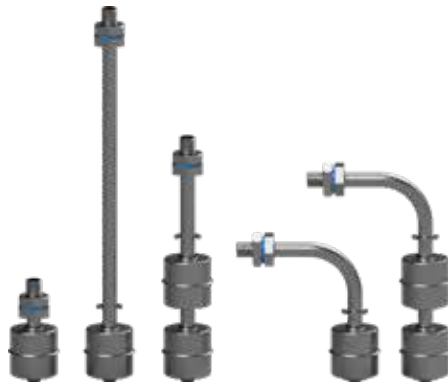


FEATURES & BENEFITS

- High quality housing suitable for most liquids, such as oil and mild chemicals
- Fully immersible
- Ideal for water tank systems, such as rain or waste water management and activating boat bilge pumps
- Can be used to control pumps and electric valves when liquid level change
- Features a waterproof membrane which mounts on the inside of the tank.

Code	Description	Cable Length	Packing	MOQ	Ctn
FSW-12565	Magnetic Horizontal Float Switch	4m	1	1	20

STAINLESS STEEL MAGNETIC FLOAT SWITCHES



FEATURES & BENEFITS

- Single & Dual Point Options
- Magnetic Reed Switch Technology
- High Reliability / Repeatability Standards
- Direct Interface to Controllers
- High Temperature Rating
- High Pressure Rating
- Suitable for Corrosive Conditions
- Commonly used in food processing, medical, heating, and cooling equipment
- Includes approx 300mm of cable for connection
- Epoxy sealed cable outlet
- Gasket seal.

Code	Description	Height	Packing	MOQ	Ctn
FSW-12570	Single SS Float Switch - Short Stem Vertical	62mm	1	1	1
FSW-12571	Single SS Float Switch - Vertical	216mm	1	1	1
FSW-12572	Dual SS Float Switch - Long Stem Vertical	140mm	1	1	1
FSW-12573	Single SS Float Switch - Side Mounted	81mm	1	1	1
FSW-12574	Dual SS Float Switch - Side Mounted	130mm	1	1	1

METERING & CONTROL

POTABLE WATER HYDROSTATIC LEVEL TRANSDUCERS



FEATURES & BENEFITS

- Excellent repeatability and long term stability
- Excellent anti-interference ability
- Measure depth or level measurement in potable, raw, ground and rain water applications (not suitable for sewage or wastewater applications).

Code	Description	Depth Range	Cable Length
FPC-12571	Hydrostatic Level Transducer - Potable Water	0 - 10 m	24m
FPC-12571-10	Hydrostatic Level Transducer - Potable Water	0 - 10 m	10m
FPC-12571-E	Hydrostatic Level Transducer - Potable Water	0 - 4 m	24m
FPC-12573-E	Hydrostatic Level Transducer - Potable Water	0 - 1 m	24m

SEWAGE & WASTEWATER HYDROSTATIC LEVEL TRANSDUCERS



FEATURES & BENEFITS

- Excellent repeatability and long term stability
- Excellent anti-interference ability
- Measure depth or level measurement in potable, raw, ground and rain water, sewage and wastewater applications.

Code	Description	Depth Range	Cable Length
FPC-12569-10	Hydrostatic Level Transducer - Sewage	0 - 1 m	10m
FPC-12570	Hydrostatic Level Transducer - Sewage	0 - 10 m	24m
FPC-12570-10	Hydrostatic Level Transducer - Sewage	0 - 10 m	10m
FPC-12570-30	Hydrostatic Level Transducer - Sewage	0 - 10 m	30m
FPC-12570-50	Hydrostatic Level Transducer - Sewage	0 - 10 m	50m
FPC-12572-10	Hydrostatic Level Transducer - Sewage	0 - 2.5 m	10m
FPC-12575-10	Hydrostatic Level Transducer - Sewage	0 - 4 m	10m
FPC-12575-30	Hydrostatic Level Transducer - Sewage	0 - 4 m	30m
FPC-12575-50	Hydrostatic Level Transducer - Sewage	0 - 4 m	50m
FPC-12575-E	Hydrostatic Level Transducer - Sewage	0 - 4 m	24m

SINGLE POINT CONDUCTIVITY SENSING PROBES



FEATURES & BENEFITS

- Designed and manufactured with a single preset, stainless steel sensing point
- Typically set up in conjunction with conductivity sensing relays, which would interface with a pump control circuit
- Can be used in a wide range of applications including potable, grey, black, storm and rain water
- While the probe has no serviceable parts, a periodic wipe down is recommended to maintain optimal performance.

Code	Description	Cable Length
FPC-12521	Conductivity Sensing Probe - Single Point	10m

4 POINT CONDUCTIVITY SENSING PROBES



FEATURES & BENEFITS

- Designed and manufactured with 4 preset, stainless steel sensing points. These are typically used as common, stop, start and high level
- The probe would normally be set up in conjunction with conductivity sensing relays, which would interface with a pump control circuit
- Can be used in a wide range of applications including potable, grey, black, storm and rain water
- While the probe has no serviceable parts, a periodic wipe down is recommended to maintain optimal performance.

Code	Description	Cable Length
FPC-12530	Conductivity Sensing Probe - 4 Point - 200mm	10m
FPC-12531	Conductivity Sensing Probe - 4 Point - 300mm	10m
FPC-12532	Conductivity Sensing Probe - 4 Point - 400mm	10m
FPC-12533	Conductivity Sensing Probe - 4 Point - 700mm	10m
FPC-12534	Conductivity Sensing Probe - 4 Point - 900mm	10m

METERING & CONTROL

10 POINT CONDUCTIVITY SENSING PROBES



FEATURES & BENEFITS

- Designed and manufactured with 10 preset, stainless steel sensing points
- The probe would normally be set up in conjunction with conductivity sensing relays, which would interface with a pump control circuit
- Can be used in a wide range of applications including potable, grey, black, storm and rain water
- While the probe has no serviceable parts, a periodic wipe down is recommended to maintain optimal performance.

Code	Description	Cable Length
FPC-12536	Conductivity Sensing Probe - 10 Point - 1m	10m
FPC-12537	Conductivity Sensing Probe - 10 Point - 1.5m	10m

PIPE MOUNT PRESSURE TRANSDUCERS



FEATURES & BENEFITS

- Designed to be mounted in a pipe to measure pressure, providing a precise 4-20mA reading
- Small body diameter
- Excellent repeatability and long term stability
- Excellent anti-interference ability
- Suitable for use in raw, rain, potable and ground water applications.

Code	Description	Pressure Range	Cable Length
COM-30608-4BAR	Pressure Transducer	0-4bar (0-400kPa)	3m
COM-30609-E	Pressure Transducer	0-10bar (0-1000kPa)	3m
COM-30608-E	Pressure Transducer	0-16bar (0-1600kPa)	3m
COM-30604-E	Pressure Transducer	0-25bar (0-2500kPa)	3m

TRANSDUCER HANGING BRACKET



FEATURES & BENEFITS

- Designed to provide a simple and effective solution to hang hydrostatic level transducers in the correct position in a tank
- Applies even pressure to the transducer cable, ensuring the internal breather tube is not deformed or kinked in any way.

Code	Description
FPC-12568	Transducer Hanging Bracket

TANK FILL PUMP CONTROLLER - PUMP SHUT-OFF



FEATURES & BENEFITS

- Provides power supply to an automatic pump, used to transfer stormwater from a collection pit to a storage tank
- When the storage tank is full and the high level float switch closes, the controller inhibits the pump and the 'tank full' indicator light is illuminated
- Power to the pump is restored when the level in the storage tank falls and the float switch opens.

Code	Description	Amp Rating	Enclosure Size
FPC-11005	Tank Fill Pump Controller - Standard	6 Amp Max	200x160x95mm
FPC-11006	Tank Fill Pump Controller - Quick Plug	6 Amp Max	200x160x95mm

METERING & CONTROL

TANK FILL CONTROLLERS - VALVE SHUT-OFF



FEATURES & BENEFITS

- Ideal for maintaining water at predetermined levels in a tank, swimming pool or reservoir
- When tank full level is reached, the controller pulse closes the valve, ensuring no further water enters the tank, and if the water level drops to low level, the valve is opened

Specific to standard version:

- Switching differential: Min 25mm, max 1m

Specific to dual float version:

- The use of 2 floats allows for greater differential between 'valve open' and 'valve close' levels, making this controller ideal for controlling water level in larger tanks.

Code	Description	Enclosure Size
FPC-12700	Tank Fill Valve Controller - Standard	200x160x95mm
FPC-12702	Tank Fill Valve Controller - Dual Float	300x200x150mm

LOW LEVEL PUMP SHUT-OFF CONTROLLER - STANDARD



FEATURES & BENEFITS

- Provides power supply to a pump, used to pump water from a tank into a home or other application
- When the level falls and the float opens, the controller shuts off power to the pump to prevent it from running dry, and the 'tank empty' indicator light is illuminated
- Power to the pump is restored when the level in the tank rises and the float switch closes.

Code	Description	Amp Rating	Enclosure Size
FPC-11010	Low Level Pump Shut-Off Controller - Standard	6 Amps	200x160x95mm

UNDERSINK ALARM & SHUT-OFF CONTROLLERS - VALVE/DISHWASHER SHUT OFF



FEATURES & BENEFITS

- In the event of 'high level' or moisture detected in the drip tray (if applicable), the controller activates the alarm, pulse closes the valve (if applicable) and isolates power to the dishwasher (if applicable), ensuring no further mains water enters the sink and chamber
- If power to the controller is lost or switched off, the valve is immediately closed.

Code	Description	Enclosure Size
FPC-12659	Undersink Alarm - Valve Shut-Off	200x160x95mm
FPC-12660	Undersink Alarm - Dishwasher Shut-Off	200x160x95mm
FPC-12661	Undersink Alarm - Valve & Dishwasher Shut-Off	200x160x95mm
FPC-12662	Undersink Alarm - Valve & Dishwasher Shut-Off with Drip Tray Moisture Sensor	200x160x95mm
FPC-12666	Undersink Alarm - Valve & Dual Dishwasher Shut-Off	240x190x95mm
FPC-12667	Undersink Alarm - Dual Valve & Dishwasher Shut-Off	200x160x95mm

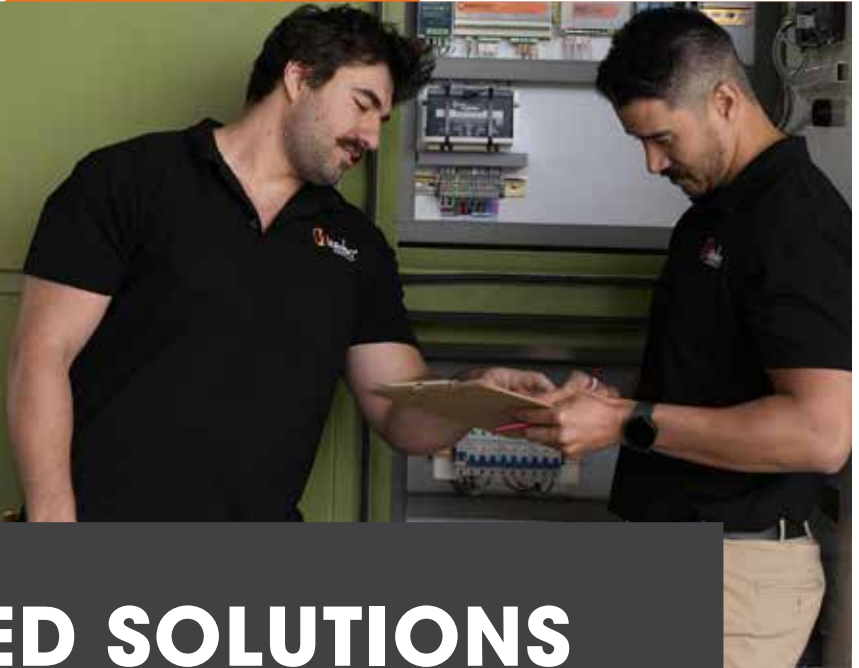
RAIN/MAINS PUMP CONTROLLER - QUICK PLUG



FEATURES & BENEFITS

- Provides a continuous supply of water for a variety of uses
- Prioritises and maximises the use of rain water
- Comprises a controller, a pulse latching solenoid valve and float switches
- Monitors the level of stored rain water and switches the valve accordingly
- Provides a switched output for the control of a single phase pump
- Pre-fitted with sockets for the valve, pump and float switch
- Quick Plug version requires no hard wiring
- Ideal for DIY installations.

Code	Description	Amp Rating	Enclosure Size
FPC-12721-HD	Rain/Mains Controller with Quick Plug	6 Amps	200x160x95mm



ENGINEERED SOLUTIONS

Your trusted partner for custom Pump and Motor Control Automation Systems!

In the dynamic landscape of industrial automation and control systems, MATElec Australia stands as a leader in innovation and excellence. With a credible and proven track record, spanning more than two decades and more than 150,000 control panels, MATElec Australia is qualified to be your trusted partner for designing and building customised engineered solutions, tailored to the unique and diverse needs of your control/automation system.

OUR EXPERTISE

MATElec Australia has in-house, a team of highly skilled engineers, both electrical and mechanical, as well as a team of qualified electricians, all of whom have a deep understanding of the most sophisticated of control systems. Given their in-depth knowledge and

understanding of proven control functionality, you can rest assured, the most innovative solution will be offered, every time.

STATE-OF-THE-ART TECHNOLOGY

Staying at the forefront of technological advancements is our commitment. MATElec Australia continues to invest in embracing new technology through networking and training, to ensure our control systems, that incorporate both our own proprietary control modules as well as highly reputed industrial PLC & HMI software solutions, provide a robust, smart, and best-practice system control.

CUSTOMISED SOLUTIONS

We understand the diversity of electrical control systems, and that very few applications are the same. We take a personalised approach to every project. Whether your requirements relate to water treatment, pumping, ventilation, heating & cooling, manufacturing process, mining and civil infrastructure, agriculture, or any other industry requiring electrical system control or automation, we work closely with you to design and build solutions that align with your specific needs, ensuring maximum efficiency and cost-effectiveness.

CUSTOMER-CENTRIC APPROACH

Our success is rooted in our dedication to customer satisfaction. We work closely with you at every step, providing transparent communication and timely updates. Your feedback and requirements are at the forefront of our design and implementation process.

GLOBAL REACH, LOCAL PRESENCE

With a global footprint, MATEtec Australia has the capacity to serve clients both nationally and internationally. Our local presence ensures quick response times and on-site support, while our global network allows us to tap into a diverse range of expertise and resources.

At MATEtec Australia, we are not just in the business of creating control and automation solutions; we are in the business of building lasting partnerships. Our aim is to empower your business with the electrical controls required, to enhance the system you offer in the market, giving you the competitive edge that will ensure your product, is the product of choice.

We remain dedicated to the success of our clients. Reach out to us today, and let's embark on a mutually beneficial partnership that ensures the control solution that drives your system, is the best in the industry.



SCALE AND EFFICIENCY

One of MATEtec Australia's distinctive features is the scale of our manufacturing facility, which is capable of producing more than two thousand control panels per month. This capacity speaks to our efficiency and readiness to meet the demands of large-scale projects, ensuring timely delivery without compromising quality.

TURNKEY SOLUTIONS

From concept to commissioning, MATEtec Australia offers turnkey solutions that encompass the entire project lifecycle. Our services include design, engineering, fabrication, installation, testing, and ongoing technical support. This holistic approach ensures a smooth and hassle-free experience for our clients.

**Contact us with your client's
Control Panel needs**

INSTALLATION & CABLE
MANAGEMENT

DETECTION, SAFETY
& WARNING

METERING & CONTROL

FASTENERS, INDUSTRIAL
& TOOLING

LIGHTING & SENSORS



FASTENERS, INDUSTRIAL & TOOLING



FASTENERS - MIXED SCREW TYPES



FEATURES & BENEFITS

- Comprehensive range of variants, sizes and materials
- Multiple base materials catered for, e.g. steel, timber, masonry and plaster
- Unique packaging system to simplify merchandising, storage and using.

BUGLE HEAD

Code	Description & Size	Coating	Packing	Ctn
BGN-G6M20	Bugle Head Needle Point Screw 6G x 20mm	C2 Corrosion Resistant	300/Jar	16
BGN-G6M25	Bugle Head Needle Point Screw 6G x 25mm	C2 Corrosion Resistant	300/Jar	16
BGN-G6M32	Bugle Head Needle Point Screw 6G x 32mm	C2 Corrosion Resistant	200/Jar	16
BGN-G6M35	Bugle Head Needle Point Screw 6G x 35mm	C2 Corrosion Resistant	200/Jar	16
BGN-G6M41	Bugle Head Needle Point Screw 6G x 41mm	C2 Corrosion Resistant	100/Jar	16
BGN-G6M45	Bugle Head Needle Point Screw 6G x 45mm	C2 Corrosion Resistant	100/Jar	16
BGN-G7M20	Bugle Head Needle Point Screw 7G x 20mm	C2 Corrosion Resistant	300/Jar	16
BGN-G7M25	Bugle Head Needle Point Screw 7G x 25mm	C2 Corrosion Resistant	300/Jar	16
BGN-G7M32	Bugle Head Needle Point Screw 7G x 32mm	C2 Corrosion Resistant	200/Jar	16
BGN-G7M45	Bugle Head Needle Point Screw 7G x 45mm	C2 Corrosion Resistant	100/Jar	16
BGN-G7M50	Bugle Head Needle Point Screw 7G x 50mm	C2 Corrosion Resistant	100/Jar	16
BGN-G7M57	Bugle Head Needle Point Screw 7G x 57mm	C2 Corrosion Resistant	100/Jar	16
BGN-G8M65	Bugle Head Needle Point Screw 8G x 65mm	C2 Corrosion Resistant	100/Jar	16
BGN-G8M75	Bugle Head Needle Point Screw 8G x 75mm	C2 Corrosion Resistant	100/Jar	16
BGN-G10M38	Bugle Head Needle Point Coarse Thread Grabber 10G x 38mm	C2 Corrosion Resistant	200/Jar	16

BUTTON HEAD

Code	Description & Size	Coating	Packing	Ctn
BTD-G8M12	Button Head Drill Point Screw 8G x 12mm	C2 Corrosion Resistant	300/Jar	16
BTD-G8M16	Button Head Drill Point Screw 8G x 16mm	C2 Corrosion Resistant	300/Jar	16
BTD-G8M20	Button Head Drill Point Screw 8G x 20mm	C2 Corrosion Resistant	300/Jar	16
BTD-G8M25	Button Head Drill Point Screw 8G x 25mm	C2 Corrosion Resistant	300/Jar	16
BTD-G8M25/G	Button Head Drill Point Screw C3 8G x 25mm	C3 Mechanically Galvanised	200/Jar	16
BTD-G8M32	Button Head Drill Point Screw 8G x 32mm	C2 Corrosion Resistant	200/Jar	16
BTN-G8M12	Button Head Needle Point Screw 8G x 12mm	C2 Corrosion Resistant	300/Jar	16
BTN-G8M15	Button Head Needle Point Screw 8G x 15mm	C2 Corrosion Resistant	300/Jar	16
BTN-G8M20	Button Head Needle Point Screw 8G x 20mm	C2 Corrosion Resistant	300/Jar	16
BTN-G8M25	Button Head Needle Point Screw 8G x 25mm	C2 Corrosion Resistant	300/Jar	16
BTN-G8M25/G	Button Head Needle Point Screw C3 8G x 25mm	C3 Mechanically Galvanised	200/Jar	16
BTN-G8M32	Button Head Needle Point Screw 8G x 32mm	C2 Corrosion Resistant	200/Jar	16



INSTALLATION & CABLE
MANAGEMENT

DETECTION, SAFETY
& WARNING

METERING & CONTROL

FASTENERS, INDUSTRIAL
& TOOLING

LIGHTING & SENSORS

FASTENERS, INDUSTRIAL & TOOLING

RIBBED HEAD

Code	Description & Size	Coating	Packing	Ctn
CBN-G8M32	Chipboard Screw Needle Point Ribbed Head 8G x 32mm SQ2/PH2 Drive	C2 Corrosion Resistant	200/Jar	16
CBN-G8M50	Chipboard Screw Needle Point Ribbed Head 8G x 50mm SQ2/PH2 Drive	C2 Corrosion Resistant	100/Jar	16



FLAT TOP

Code	Description & Size	Coating	Packing	Ctn
FTD-G10M16	Flat Top Drill Point Screw 10G x 16mm	C2 Corrosion Resistant	300/Jar	16
FTN-G10M16	Flat Top Needle Point Screw 10G x 16mm	C2 Corrosion Resistant	300/Jar	16



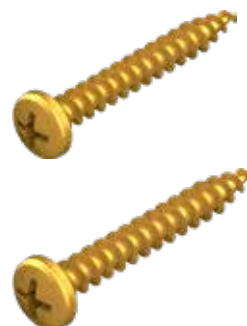
HEX HEAD - 5/16" HEX SOCKET DRIVER

Code	Description & Size	Coating	Packing	Ctn
HXD-G10M16/G	Hex Head Drill Point Screw 10G x 16mm	C3 Corrosion Resistant	200/Jar	16
HXD-G10M25/G	Hex Head Drill Point Screw 10G x 25mm	C3 Corrosion Resistant	200/Jar	16
HXD-G12M20/G	Hex Head Drill Point Screw 12G x 20mm	C3 Corrosion Resistant	200/Jar	16
HXD-G12M55/GS	Hex Head Drill Point Roofing Screw 12G x 55mm with Seal	C4 Corrosion Resistant	100/Jar	16
HXN-G10M20/G	Hex Head Needle Point Screw 10G x 20mm	C3 Corrosion Resistant	200/Jar	16
HXN-G10M25/GS	Hex Head Type 17 Roofing Screw - 10G x 25mm	C3 Corrosion Resistant	200/Jar	16
HXN-G12M25/GS	Hex Head Type 17 Roofing Screw - 12G x 25mm with Seal	C3 Corrosion Resistant	200/Jar	16
HXN-G12M50/GS	Hex Head Type 17 Roofing Screw - 12G x 50mm with Seal	C3 Corrosion Resistant	100/Jar	16



PAN HEAD

Code	Description & Size	Coating	Packing	Ctn
PHD-G8M16	Pan Head Drill Point Screws 8G x 16mm	C4 Corrosion Resistant	300/Jar	16
PHN-G6M20	Pan Head Needle Point Screws 6G X 20mm	C2 Corrosion Resistant	300/Jar	16
PHN-G6M30	Pan Head Needle Point Screws 6G X 30mm	C2 Corrosion Resistant	300/Jar	16
PHN-G7M12	Pan Head Needle Point Screws 7G x 12mm	C2 Corrosion Resistant	300/Jar	16
PHN-G7M20	Pan Head Needle Point Screws 7G x 20mm	C2 Corrosion Resistant	200/Jar	16
PHN-G7M25	Pan Head Needle Point Screws 7G x 25mm	C2 Corrosion Resistant	200/Jar	16
PHN-G7M30	Pan Head Needle Point Screws 7G x 30mm	C2 Corrosion Resistant	200/Jar	16
PHN-G7M40	Pan Head Needle Point Screws 7G x 40mm	C2 Corrosion Resistant	100/Jar	16
PHN-G7M50	Pan Head Needle Point Screws 7G x 50mm	C2 Corrosion Resistant	100/Jar	16



WAFER HEAD

Code	Description & Size	Coating	Packing	Ctn
WFD-G10M22	Wafer Head Drill Point Screws 10G x 22mm	C2 Corrosion Resistant	30/Jar	16



ANCHORS



FEATURES & BENEFITS

- Comprehensive range of variants, sizes and materials
- Multiple base materials catered for, e.g. steel, timber, masonry and plaster
- Unique packaging system to simplify merchandising, storage and using.

WALL LOCK

Code	Description & Size	Coating	Packing	Ctn
WLN-G6.3M32	Wall Lock Needle Point Screw 6.3G x 32mm	Zinc Plated	200/Jar	16



PLASTER FIXING SCREW

Code	Description & Size	Coating	Packing	Ctn
PSD-M33/N	Nylon Plaster Fixing Screw 6G, 7G & 8G x 33mm Qty 100	Nylon	100/Jar	16
PSD-M38/ZP	Zinc Plaster Fixing Screw 8G x 38mm Qty 100	Zinc Plated	100/Jar	16
PSD-M42/N	Nylon Plaster Fixing Screw 6G, 7G & 8G x 42mm Qty 100	Nylon	100/Jar	16
PST-M32/ZP	Zinc Plaster Fixing Screw - Twin Point Tip 6G, 7G & 8G x 32mm Qty 100	Zinc Plated	100/Jar	16



EYE ANCHORS

Code	Description & Size	Coating	Packing	Ctn
ANC-M5-EYE	Eye Anchor 5mm x 50mm	Zinc Plated	100/Jar	16



HOLLOW WALL ANCHORS

Code	Description & Size	Coating	Packing	Ctn
HWA-10/18M52	Hollow Wall Anchor, 10mm penetration hole, 18mm max wall width, 52mm shaft length	Zinc Plated	50/Jar	16
HWA-8/16M39	Hollow Wall Anchor, 8mm penetration hole, 16mm max wall width, 39mm shaft length	Zinc Plated	100/Jar	16
HWA-8/18M46	Hollow Wall Anchor, 8mm penetration hole, 18mm max wall width, 46mm shaft length	Zinc Plated	100/Jar	16
HWA-8/5M21	Hollow Wall Anchor, 8mm penetration hole, 5mm max wall width, 21mm shaft length	Zinc Plated	100/Jar	16



INSTALLATION & CABLE
MANAGEMENT

DETECTION, SAFETY
& WARNING

METERING & CONTROL

FASTENERS, INDUSTRIAL
& TOOLING

LIGHTING & SENSORS

FASTENERS, INDUSTRIAL & TOOLING

SLEEVE ANCHORS

Code	Description & Size	Coating	Packing	Ctn
SAB-10/50	Sleeve Anchor Bolt 10mm x 50mm	Zinc Plated	50/Jar	8
SAB-10/60	Sleeve Anchor Bolt 10mm x 60mm	Zinc Plated	50/Jar	8
SAB-10/75	Sleeve Anchor Bolt 10mm x 75mm	Zinc Plated	50/Jar	8
SAB-8/40	Sleeve Anchor Bolt 8mm x 40mm	Zinc Plated	100/Jar	8
SAB-8/65	Sleeve Anchor Bolt 8mm x 65mm	Zinc Plated	50/Jar	8
SAEB-8/45	Sleeve Anchor Eye Bolt 8mm x 45mm	Zinc Plated	100/Jar	8
SATW-6/40	Sleeve Anchor Tie Wire 6mm x 40mm	Zinc Plated	100/Jar	16



SPRING TOGGLES

Code	Description & Size	Coating	Packing	Ctn
ST-18X2	Spring Toggle 1/8" x 2"	Zinc Plated	100/Jar	16
ST-18X3	Spring Toggle 1/8" x 3"	Zinc Plated	100/Jar	16
ST-316X2	Spring Toggle 3/16" x 2"	Zinc Plated	50/Jar	16
ST-316X3	Spring Toggle 3/16" x 3"	Zinc Plated	50/Jar	16



NYLON ANCHORS

Code	Description & Size	Coating	Packing	Ctn
NAN-5/25	Nylon Anchor Nail Mushroom Head 5 x 25mm	Nylon	100/Jar	16
NAN-5/25SS	Nylon Anchor Nail 304 Stainless Steel Mushroom Head 5 x 25mm	Nylon	100/Jar	16
NAN-5/38	Nylon Anchor Nail Mushroom Head 5 x 38mm	Nylon	100/Jar	16
NAN-6.5/25	Nylon Anchor Nail Mushroom Head 6.5 x 25mm	Nylon	100/Jar	16
NAN-6.5/38	Nylon Anchor Nail Mushroom Head 6.5 x 38mm	Nylon	100/Jar	16
NAN-6.5/50	Nylon Anchor Nail Mushroom Head 6.5 x 50mm	Nylon	100/Jar	16
NAS-5/27	Nylon Anchor Screw Round Head 5 x 27mm	Nylon	100/Jar	16
NAS-5/37	Nylon Anchor Screw Round Head 5 x 37mm	Nylon	100/Jar	16
NAS-6/60	Nylon Anchor Screw Round Head 6 x 60mm	Nylon	100/Jar	16



WALL PLUGS

Code	Description & Size	Coating	Packing	Ctn
WPG-M7/25	Green Wall Plug - With Chamfer 7mm x 25mm Qty 200	PE	200/Jar	16
WPG-M7/35	Green Wall Plug - With Chamfer 7mm x 35mm Qty 200	PE	200/Jar	16
WPG-M7/50	Green Wall Plug - With Chamfer 7mm x 50mm Qty 150	PE	150/Jar	16
WPR-M6/25	Red Wall Plug 6mm x 25mm Qty 200	PE	200/Jar	16
WPR-M6/32	Red Wall Plug 6mm x 32mm Qty 200	PE	200/Jar	16
WPR-M6/38	Red Wall Plug 6mm x 38mm Qty 200	PE	200/Jar	16

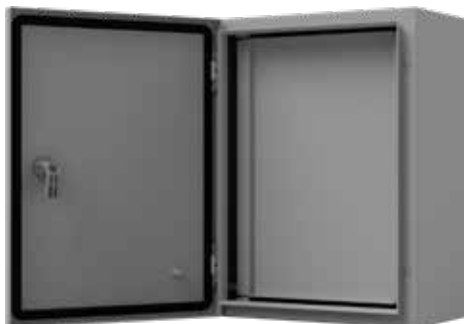


DIN RAIL



Code	Description	Packing	MOQ	Ctn
DR-7.5x35S/1M	Steel - 7.5mm x 35mm - Slotted - 1 Metre	2	2	50

316 STAINLESS STEEL & MILD STEEL RANGE METAL ENCLOSURES



FEATURES & BENEFITS

- Cable entry plate with gasket included
- Mounting plate included
- Other sizes available on request
- Heavy duty industrial design
- Fully welded construction
- Comprehensive range.

Code	Description	Packing	MOQ	Ctn
FEB-30321/ZP	Enclosure Zinc-Plated ND 300x200x150mm Grey	1	1	1
FEB-30331/ZP	Enclosure Zinc-Plated Steel ND 300x200x150mm Grey	1	1	1
FEB-40431/ZP	Enclosure Zinc-Plated ND 400x300x150mm Grey	1	1	1
FEB-40432/ZP	Enclosure Zinc-Plated Steel ND 400x300x200mm Grey	1	1	1
FEB-40442/ZP	Enclosure Zinc-Plated Steel ND 400x400x200mm Grey	1	1	1
FEB-41432-SNB	Enclosure 316 S/S ID 400x300x200mm	1	1	1
FEB-41442-SNB	Enclosure 316 S/S ID 400x400x200mm	1	1	1
FEB-50552/ZP	Enclosure Zinc-Plated ID 500x500x200mm Grey	1	1	1
FEB-50553/ZP	Enclosure Zinc-Plated Steel ID 500x500x300mm Grey	1	1	1
FEB-51553-SNB	Enclosure 316 S/S ID 500x500x300mm	1	1	1
FEB-606425/ZP	Enclosure Zinc-Plated ID 600x400x250mm Grey	1	1	1
FEB-60643/ZP	Enclosure Zinc-Plated Steel ID 600x400x300mm Grey	1	1	1
FEB-60662/ZP	Enclosure Zinc-Plated Steel ID 600x600x200mm Grey	1	1	1
FEB-60663/ZP	Enclosure Zinc-Plated Steel ID 600x600x300mm Grey	1	1	1
FEB-61663-SNB	Enclosure 316 S/S ID 600x600x300mm	1	1	1
FEB-80863/ZP	Enclosure Zinc-Plated Steel ID 800x600x300mm Grey	1	1	1
FEB-80884/ZP	Enclosure Zinc-Plated Steel ID 800x800x400mm Grey	1	1	1

FASTENERS, INDUSTRIAL & TOOLING

CABLE TIE TENSIONING TOOLS



FTL-20200



FTL-20300



FTL-20500

FTL-20500-JAW

FTL-20500-BLADE

Replaceable blade and jaw kits available.



FTL-20800

FEATURES & BENEFITS

- Robust and heavy duty design
- Tensions and cuts cable ties
- Adjustable tension feature on FTL-20200 & FTL-20500
- Full range of compatible cable ties available
- FTL-20200 compatible with up to 4.8mm nylon cable ties
- FTL-20300 compatible with up to 12mm nylon cable ties
- FTL-20500 compatible with up to 7.9mm stainless steel cable ties
- FTL-20800 compatible with up to 12mm stainless steel cable ties.

Code	Description	Packing	MOQ	Ctn
FTL-20200	Nylon Cable Tie Tensioning Tool - Standard	1	1	20
FTL-20300	Nylon Cable Tie Tensioning Tool - Industrial	1	1	6
FTL-20500	Stainless Steel Cable Tie Tensioning Tool - A Type	1	1	5
FTL-20500-BLADE	Replaceable Blade S/S Cable Tie Gun (A Type)	1	1	5
FTL-20500-JAW	Replaceable Jaw S/S Cable Tie Gun (A Type)	1	1	5
FTL-20800	Stainless Steel Cable Tie Tensioning Tool - B Type	1	1	10

HEAVY DUTY HSS HOLESAWS



FEATURES & BENEFITS

- Complete with removable arbor
- Supplied with allen key
- Packaged in reusable plastic cases
- Cutters and arbors are interchangeable with other brands
- Comprehensive range.

Code	Description	Packing	MOQ	Ctn
FTL-10101	Heavy Duty Holesaw - 16mm	10	1	240
FTL-10102	Heavy Duty Holesaw - 18mm	10	1	240
FTL-10103	Heavy Duty Holesaw - 20mm	10	1	240
FTL-10105	Heavy Duty Holesaw - 22mm	10	1	240
FTL-10113	Heavy Duty Holesaw - 23mm	10	1	240
FTL-10106	Heavy Duty Holesaw - 25mm	10	1	240
FTL-10114	Heavy Duty Holesaw - 29mm	10	1	120
FTL-10107	Heavy Duty Holesaw - 32mm	10	1	120
FTL-10108	Heavy Duty Holesaw - 40mm	10	1	100
FTL-10109	Heavy Duty Holesaw - 50mm	10	1	50
FTL-10110	Heavy Duty Holesaw - 63mm	1	1	50
FTL-10111	Heavy Duty Holesaw - 75mm	1	1	50
FTL-10112	Heavy Duty Holesaw - 93mm	1	1	30
FTL-BIT	Drill Bit Pilot to suit Holesaws 16-75mm	10	10	240



LIGHTING & SENSORS

OXFORD VANDAL RESISTANT IP66 WEATHERPROOF LED BATTENS



FEATURES & BENEFITS

- Vandal resistant strength
- High quality industrial design
- Sleek slimline design
- Quick wiring access point
- OSRAM LED driver and high output LED chip
- SAA approved
- Ideal for high traffic areas and washdown bays
- All fixings and stainless steel brackets supplied
- Available as an emergency backup version, or with a sensor
- 10 year warranty (5 year for emergency & sensor versions).

Code	Description	Lumens	Packing	MOQ	Ctn
FLU-06020	Oxford IP66 LED Fitting - 20W	2600	1	1	9
FLU-06020-S	Oxford IP66 LED Fitting - 20W - With Sensor	2600	1	1	9
FLU-12036	Oxford IP66 LED Fitting - 36W	4680	1	1	6
FLU-12036-EB	Oxford IP66 LED Fitting - 36W - Emergency Version	4680/450 on battery	1	1	6
FLU-12036-S	Oxford IP66 LED Fitting - 36W - With Sensor	4680	1	1	6
FLU-OXCLIP/36	Oxford 316 Grade Stainless Steel Clips		12/pack	1 pack	1 pack

CAPRICORN IP65 WEATHERPROOF LED BATTENS



DOMESTIC /
TEMPORARY
LIGHTING



capricorn

FEATURES & BENEFITS

- Sleek slimline design
- No lens clips required
- Quick wiring access point
- LED driver and LED chip SMD 2835
- SAA approved
- 3 year warranty.

Code	Description	Lumens	Packing	MOQ	Ctn
CAP-18WCW	Capricorn IP65 LED Fitting - 600mm 18W	1500	1	1	12
CAP-36WCW	Capricorn IP65 LED Fitting - 1200mm 36W	3000	1	1	8

INSTALLATION & CABLE
MANAGEMENT

DETECTION, SAFETY
& WARNING

METERING & CONTROL

FASTENERS, INDUSTRIAL
& TOOLING

LIGHTING & SENSORS

LIGHTING & SENSORS

BULKHEAD - WEATHERPROOF



FEATURES & BENEFITS

- UV stabilised
- Vandal resistant
- Slimline design
- Low energy consumption
- Installation fixings included
- 2 year warranty.



Code	Description	Packing	MOQ	Ctn
FLU-27286	Bulkhead - Baby Emperor Round - Opal Lens	1	1	6

LED FLOODLIGHTS



FEATURES & BENEFITS

- Driverless LED
- Ultra bright LED light source
- Ultra slim and compact design
- SAA approved
- 2 year warranty
- Ideal for residential and commercial applications
- Includes 1.5m lead and plug.



Code	Description	Lumens	Packing	MOQ	Ctn
FL-30W-5800K	Floodlight - Slimline LED - 30 Watt	2850	1	1	20
FL-50W-5800K	Floodlight - Slimline LED - 50 Watt	4750	1	1	18
FL-100W-5800K	Floodlight - Slimline LED - 100 Watt	9500	1	1	10
FL-150W-5800K	Floodlight - Slimline LED - 150 Watt	13500	1	1	5
FL-200W-5800K	Floodlight - Slimline LED - 200 Watt	18000	1	1	6

LAMP HOLDER



FEATURES & BENEFITS

- High heat resistance
- Optional mounting bracket

Code	Description	Packing	MOQ	Ctn
FLH-11211	Lamp Holder - Porcelain E.S. Non Skirted	40	1	400

PLUG & LEADS



FEATURES & BENEFITS

- AU approved
- Black colour

Code	Description	Packing	MOQ	Ctn
FFP-15000	3 Pin Plug + Lead - 3 Core 10Amp - 175cm	10	10	60
FFP-15002	3 Pin Plug + Lead - 3 Core 10Amp - 125cm	10	10	80

LIGHTING & SENSORS

TWILIGHT ADJUSTABLE DAY/NIGHT SWITCH



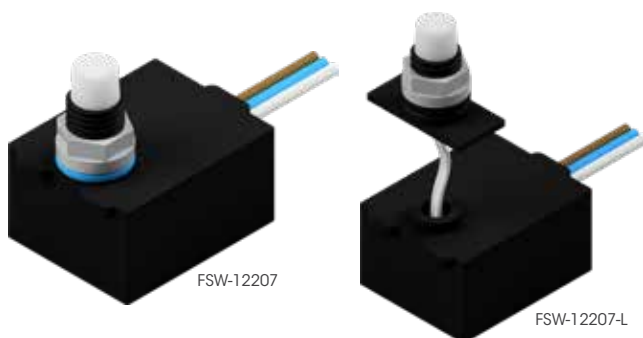
FEATURES & BENEFITS

- Photoelectric-Cell technology
- UV Stabilised
- IP66 Weatherproof Rating
- Adjustable Lux & Time On Settings
- User Friendly Setup
- Stainless Steel Captive Screws
- LED Mode Indicator
- Universal Design
- Large Terminals
- Heavy Duty Switching Capacity
- Multiple Cable Entry Options
- Universal Design – Compatible with other leading brands base units for retrofitting
- 5 year warranty.



Code	Description	Packing	MOQ	Ctn
FSW-12220	Day/Night Switch - Twilight Adjustable 16A	1	1	50

LR50 FLUSH MOUNT DAY/NIGHT SWITCH



FEATURES & BENEFITS

- Photoelectric-Cell technology
- Unique N/C 'fail on' circuitry
- Compact design - Ideal for tight applications
- Designed for recess mounting, e.g. - Inside light fittings
- 1 year warranty.



Code	Description	Packing	MOQ	Ctn
FSW-12207	Day/Night Switch - LR50 (10mm Male Entry)	1	1	10
FSW-12207-L	Day/Night Switch - LR50 with Sensor Extension	1	1	10

LR100 FLUSH MOUNT DAY/NIGHT SWITCH



FEATURES & BENEFITS

- Photoelectric-Cell technology
- Unique N/C 'fail on' circuitry
- Designed for recess mounting, e.g. - Inside light fittings
- 1 year warranty.



Code	Description	Packing	MOQ	Ctn
FSW-12218	Day/Night Switch - LR100 (20mm Male Entry)	1	1	50

AR20N & BASE - NEMA STYLE DAY/NIGHT SWITCH



FEATURES & BENEFITS - AR20N

- Photoelectric-Cell technology
- Unique N/C 'fail on' circuitry
- Heavy duty design - Ideal for street lighting
- Designed to NEMA spec
- 1 year warranty.

FEATURES & BENEFITS - NEMA BASE

- Complete with gasket, lock nut and wall/ceiling mounting bracket
- Weather cap included
- Ideal for use with MATElec AR20 unit
- 1 year warranty.



Code	Description	Packing	MOQ	Ctn
FSW-12213	Day/Night Switch - AR20N Nema 15Amp	1	1	24
FSW-12209	Nema Socket Base	1	1	40

LIGHTING & SENSORS

PIR MOTION SENSOR - 360° DUAL CEILING MOUNT - PREMIUM



FEATURES & BENEFITS

- Triple PIR for maximum detection
- Occupancy feature - High and low sensing zones
- Enlarged cable entry for easy wiring
- Easy access to setting controls under front cover
- Stainless steel fixings supplied
- 5 year warranty.



Code	Description	Packing	MOQ	Ctn
FMS-12080	PIR Motion Sensor - 360° Dual Ceiling Mount - Premium	1	1	50

PIR MOTION SENSOR - 360° DUAL CEILING MOUNT - ECONO



FEATURES & BENEFITS

- Enlarged cable entry for easy wiring
- Easy access to setting controls under front cover
- Stainless steel fixings supplied
- 5 year warranty.



Code	Description	Packing	MOQ	Ctn
FMS-50000	PIR Motion Sensor - Dual Ceiling Mount - Econo	1	1	50

PIR MOTION SENSOR - 360° FLUSH CEILING MOUNT



FEATURES & BENEFITS

- Discrete unobtrusive design
- Easy access to adjustment settings
- Fixings supplied
- 1 year warranty.



Code	Description	Packing	MOQ	Ctn
FMS-12064-A	PIR Motion Sensor - 360° Flush Ceiling Mount	1	1	50

PIR MOTION SENSOR - 360° FLUSH CEILING MOUNT - MINI



FEATURES & BENEFITS

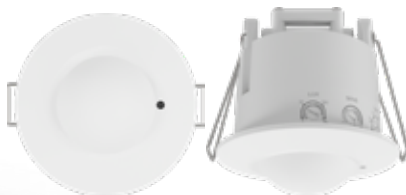
- Extremely compact slimline design
- Enlarged cable entry for easy wiring
- Fixings supplied
- 5 year warranty.



Code	Description	Packing	MOQ	Ctn
FMS-12075	PIR Motion Sensor - 360° Flush Ceiling Mount - Mini	1	1	50

LIGHTING & SENSORS

MICROWAVE PRESENCE SENSOR - 360° FLUSH CEILING MOUNT



FEATURES & BENEFITS

- Discrete unobtrusive design
- Easy access to adjustment settings
- Time, lux and sensitivity adjustments
- Fixings supplied
- 5 year warranty.



Code	Description	Packing	MOQ	Ctn
FMS-12064-M	Microwave Presence Sensor - 360° Flush Ceiling Mount	1	1	50

MICROWAVE PRESENCE SENSOR - 360° INTERNAL MOUNT MINI



IDEAL FOR
INSIDE LIGHTING
FIXTURES



FEATURES & BENEFITS

- Ideal for placement inside light fittings and fixtures
- High sensitivity to movement
- 5 year warranty.



Code	Description	Packing	MOQ	Ctn
FMS-13600	Microwave Presence Sensor - 360° Internal Mount Mini	1	1	50

PIR MOTION SENSOR - 360° SURFACE CEILING MOUNT



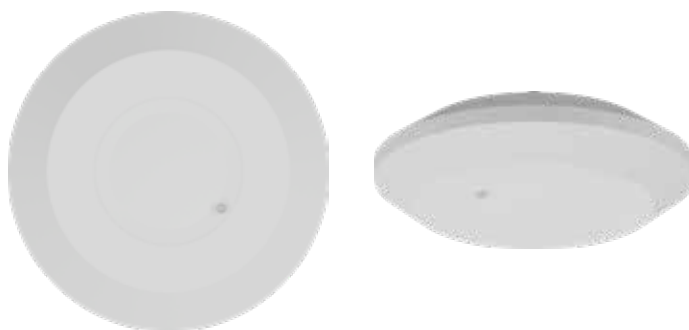
FEATURES & BENEFITS

- Easy access to setting controls under front cover
- Fixings supplied
- 5 year warranty.



Code	Description	Packing	MOQ	Ctn
FMS-12055	PIR Motion Sensor - 360° Surface Ceiling Mount - White	1	1	50
FMS-12055-B	PIR Motion Sensor - 360° Surface Ceiling Mount - Black	1	1	50

MICROWAVE PRESENCE SENSOR - 360° SURFACE CEILING



FEATURES & BENEFITS

- Optimised presence detection, perfect for open plan offices
- Detects movement through most glass, thin walls and some doors
- High sensitivity to movement
- Occupancy feature - High and low sensing zones
- Easy access to setting controls under front cover
- Stainless steel fixings supplied
- 5 year warranty.



Code	Description	Packing	MOQ	Ctn
FMS-13500	Microwave Presence Sensor - 360° Surface Ceiling Mount	1	1	50

INSTALLATION & CABLE
MANAGEMENT

DETECTION, SAFETY
& WARNING

METERING & CONTROL

FASTENERS, INDUSTRIAL
& TOOLING

LIGHTING & SENSORS

LIGHTING & SENSORS

PIR MOTION SENSOR - WALL MOUNT - 180° ROUND



FEATURES & BENEFITS

- Fixings supplied
- 5 year warranty.



Code	Description	Packing	MOQ	Ctn
FMS-12050	PIR Motion Sensor - Wall Mount - 180° Round - Black	1	1	50
FMS-12051	PIR Motion Sensor - Wall Mount - 180° Round - White	1	1	50

MOTION SENSOR - 180° WALL MOUNT - COBRA IP65



FEATURES & BENEFITS

- Sleek modern design
- Fixings supplied
- 5 year warranty.



Code	Description	Packing	MOQ	Ctn
FMS-10000	PIR Motion Sensor - 180° Wall Mount - Cobra IP65	1	1	50

PIR MOTION SENSOR - 120° WALL MOUNT - SENTRY IP66



FEATURES & BENEFITS

- Market leading weatherproof rating
- Easy access to setting controls
- 3M adhesive mounting pad
- Fixings supplied
- Premium quality
- 5 year warranty.



Code	Description	Packing	MOQ	Ctn
FMS-15000	PIR Motion Sensor - 120° Wall Mount - Sentry IP66 - Grey	1	1	40
FMS-15000-B	PIR Motion Sensor - 120° Wall Mount - Sentry IP66 - Black	1	1	40



SCAN QR CODE

to view our video series to get a comprehensive understanding of all technical and installation aspects of our smoke detection range.

INSTALLATION & CABLE
MANAGEMENT

DETECTION, SAFETY
& WARNING

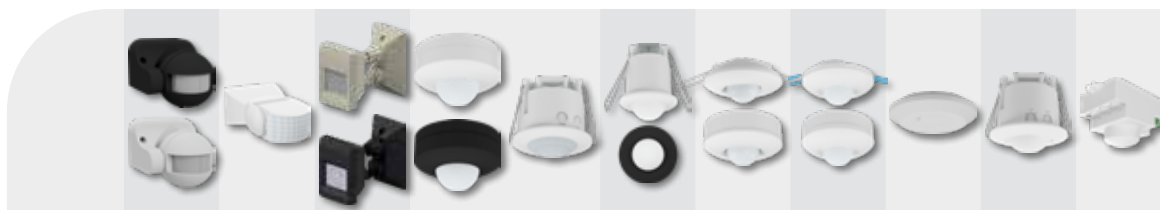
METERING & CONTROL

FASTENERS, INDUSTRIAL
& TOOLING

LIGHTING & SENSORS

LIGHTING & SENSORS

MOTION & PRESENCE SENSOR COMPARISON



	PIR MOTION SENSORS - WALL MOUNT			PIR MOTION SENSORS 360° CEILING MOUNT					MICROWAVE PRESENCE SENSORS - 360° CEILING MOUNT		
				Surface Mount	Flush Mount		Dual Mount				
	180° Round White & Black	COBRA IP65	Sentry IP66 Grey & Black	White & Black	Econo	Mini	Premium	Econo	Surface Mount	Flush Mount	Interior Mount
Code	FMS-12050 FMS-12051	FMS-10000	FMS-15000 FMS-15000-B	FMS-12055 FMS-12055-B	FMS-12064-A	FMS-12075	FMS-12080	FMS-50000	FMS-13500	FMS-12064-M	FMS-13600
Type	3 Wire PIR			3 Wire PIR					3 Wire Microwave		
Mounting	Wall			Surface Ceiling	Flush Ceiling		Flush or Surface Ceiling		Surface Ceiling	Flush Ceiling	Internal
IP Rating	IP44	IP65	IP66	IP44		IP20	IP20 (Flush) IP44 (Surface)	IP44	IP20		
Detection Angle	180°		120°	360°			360°		360°		
Detection Range	Up to 12m		Up to 18m	Up to 12m	Up to 6m		Up to 22m	Up to 16m	Up to 20m	Up to 8m	
Switching Capacity	300W LED 300W Fluro 1200W Incand		1000W Inductive (Fluro & LED) 2000W Resistive (Incand)	300W LED 300W Fluro 1200W Incand	300W LED 300W Fluro 1200W Incand	300W LED 400W Fluro 800W Incand	200W LED 600W Fluro 2000W Incand	1000W LED 1000W Fluro 2000W Incand	200W LED 300W Fluro 1200W Incand	300W LED 300W Fluro 1200W Incand	
Min LED Load	1W			1W					1W		
Manual Override	Yes			No		Yes	No	Yes	No		
Time Delay	10 sec - 7 min	10 sec - 15 mins		10 sec - 7 min	10 sec - 15 min	10 sec - 7 min	10 sec - 40 min	10 sec -30 min	8 sec - 12 min	10 sec - 12 min	
Adjustment Controls	Time Lux			Time Lux			Time Lux Sensitivity		Time Lux Sensitivity		
Voltage	220-240V 50Hz			220-240V 50Hz					220-240V 50Hz		
Colour	Black/ White	White	Grey/ Black	White/ Black	White	Black/ White	White		White		
Cutout if applicable	N/A			N/A	62mm	42mm	80mm	82m	N/A	62mm	N/A
Dimensions	N/A			88mm Ø 55mm (H)	75mm Ø 55mm (H) 19mm Pro.	50mm Ø 67mm (H) 16mm Pro.	105mm Ø 55mm (H) 37mm Pro.	104mm Ø 38mm	96mm Ø 42mm (H)	75mm Ø 55mm (H) 19mm Pro.	67mm (L) 39mm (W) 37mm (H)
Warranty	5 year			5 year					5 year		

NOTES

This image shows a full page of blank handwriting practice paper. It features a series of evenly spaced, horizontal orange lines that run across the entire width of the page. The background is a solid light gray color. There are no margins, text, or other markings on the page.

TERMS AND CONDITIONS

TERMS & CONDITIONS

MONTREAUX PTY LTD trading as MATElec Australia ACN 160 835 334 ("Company") Trading Terms & Conditions For Sale of Goods

These Trading Terms & Conditions ("Terms") apply (unless otherwise previously agreed in writing) to the supply of Goods by the Company to Customer from time to time. Any supply of Goods by the Company to the Customer made from time to time after the date of acceptance of these Terms is a supply pursuant to the supply agreement constituted by these Terms & the relevant order accepted by the Company ("Agreement") & any such supply does not give rise to a new or separate agreement.

1. Interpretation

In these Terms unless the contrary intention appears:

"Additional Charges" includes all delivery, handling & storage charges, goods & services tax, stamp duty, interest, legal & other costs of recovery of unpaid money & all other government imposts & all money, other than the Purchase Price, payable by the Customer to the Company arising out of the sale of the Goods.

"Company" means Montreux Pty Ltd, ACN 160 835 334 trading as MATElec Australia.

"Consequential Loss" means

- i. loss of revenue;
- ii. loss of profit or anticipated profit;
- iii. loss of business;
- iv. loss of business reputation;
- v. loss of opportunities;
- vi. loss of anticipated savings;
- vii. loss of goodwill; &
- viii. any other loss suffered by a party as a result of a breach of this Agreement that cannot reasonably be considered to arise directly & naturally from that breach.

"Customer" means the person to or for whom the Goods are to be supplied by the Company.

"Force Majeure Event" means any event outside the reasonable control of the Company including acts of God, war, riots, strikes, lock outs, trade disputes, break downs, mechanical failures, interruptions of transport, Government action or any other cause whatsoever, whether or not of a like nature to those specified above.

"Goods" means the goods sold to the Customer by the Company & includes any services provided by the Company to Customer.

"PPSA" means the Personal Property Securities Act 2009 (Cth), as amended.

"Purchase Price" means the list price for the goods as charged by the Company at the date of delivery or such other price as may be agreed by the Company & the Customer prior to delivery of the Goods.

2. Order for Goods

- 2.1 An order given to the Company is binding on the Company & the Customer, if:
 - 2.1.1 a written acceptance is signed for or on behalf of the Company; or
 - 2.1.2 the Goods are supplied by the Company in accordance with the order.
- 2.2 An acceptance of the order by the Company is then to be an acceptance of these Terms by the Company & the Customer & these Terms will override any conditions contained in the Customer's order. The Company reserves the right to accept a part only of any order by notifying the Customer in writing or by delivering the Goods to the Customer. No order is binding on the Company until accepted by it.
- 2.3 An order which has been accepted in whole or in part by the Company cannot be cancelled by the Customer without obtaining the prior written approval of the Company, which it may refuse in its absolute discretion. In the event cancellation of an order is approved by the Company, the Company reserves the right to claim payment from the Customer & the Customer agrees to pay a cancellation fee equivalent to 10% of the price of the order or that part of the order so cancelled.

3. Warranties

- 3.1 Subject to any of the Company's warranty statements, the Company's liability is limited to, to the extent permissible by law & at the Company's option:
 - 3.1.1 in relation to the Goods:
 - i. the replacement of the products or the supply of equivalent products
 - ii. the repair of the products
 - iii. the payment of the cost of replacing the products or of acquiring equivalent products; or
 - iv. The payment of the cost of having the products repaired
 - 3.1.2 where the Goods are services:
 - i. the supply of service again; or
 - ii. payment of the cost of having the services supplied again.
- 3.2 Any claims to be made against the Company for short delivery of Goods must be lodged with the Company in writing within 7 days of the delivery date.
- 3.3 The Customer shall inspect all Goods immediately after delivery & shall within 7 days of the delivery date & in any case prior to on-selling or otherwise using the Goods, give notice to the Company of any matter or thing by reason of which the Customer alleges the Goods or any part of the Goods are not in accordance with the sale contract & failure to give such notice shall, to the extent permitted by law, constitute unqualified acceptance & a waiver of all such claims by the Customer.
- 3.4 To the extent permitted at law, all other warranties whether implied or otherwise, not set out in these Terms or expressed in any warranty statement provided by the Company, are excluded & the Company is not liable in contract, tort (including, without limitation, negligence or breach of statutory duty) or otherwise to compensate the Customer for any Consequential Loss.

4. Delivery

- 4.1 The times quoted for delivery are estimates only & the Company accepts no liability for failure or delay in delivery of Goods. The Customer is not relieved of any obligation to accept or pay for Goods by reason of any delay in delivery. Goods may be delivered by instalments at the discretion of the Company.
- 4.2 Risk in the Goods passes to the Customer on delivery to the Customer (a) at or in the near vicinity of an address specified by the Customer; (b) into possession of the Customer or its carrier at the premises of the Company; (c) into possession of a carrier at the premises of the Company, engaged by the Company to deliver the Goods to the Customer; (d) to the wharf, rail-yard, or other transport loading station specified by the Customer.
- 4.3 All Additional Charges are payable by the Customer in addition to the Purchase Price of the Goods.
- 4.4 Return of Goods will not be accepted by the Company except by prior agreement in writing with the Company. Any Goods returned will be subject to a cartage & handling charge of 20% of the Purchase Price of those Goods. The Customer agrees that the Company may deduct any cartage & handling charge from any credit of the Customer's account except where the Company agrees that it has supplied the wrong goods.

5. Price & Payment

- 5.1 The Customer must pay the Purchase Price & the Additional Charges to the Company.
- 5.2 If the Customer is in default, the Company may at its option withhold further deliveries or cancel a contract without prejudice to any of its existing rights, withdraw credit or refuse any further credit.
- 5.3 The terms of payment are as follows, unless otherwise agreed to in writing by the Company:
 - (a) in the case of a Customer granted an approved credit account by & with the Company - 30 days from the end of the month of purchase;
 - (b) in any other case, Cash on Delivery (COD)
- 5.4 Interest is charged at the rate of 1.5% per month or part of a month from the expiry of that period until the date payment is received by the Company.
- 5.5 All amounts payable by the Customer under these Terms must be paid without set-off, cross-demand or counter claim of any kind.
- 5.6 Any monies refunded by the Company to the Customer, whether in consequence of the cancellation of an order or otherwise, shall be repaid without interest & after deduction of any amount the Company may be entitled to charge & it is expressly agreed that the Customer shall not make or maintain any claim against the Company for payment of interest on monies refunded or to be refunded.

6. Retention of Title

- 6.1 Ownership, title & property in the Goods & in the proceeds of sale of those Goods remains with the Company until payment in full for the Goods & all sums due & owing by the Customer to the Company on any account has been made. Until the date of payment:
 - 6.1.1 the Customer has the right to sell the Goods in the ordinary course of business;
 - 6.1.2 the Goods are always at the risk of the Customer.
- 6.2 The Customer is deemed to be in default immediately upon the happening of any of the following events:
 - 6.2.1 if any payment to the Company is not made promptly before the due date for payment;
 - 6.2.2 if the Customer ceases to carry on business or stops or suspends payment or states its intention of so doing or is unable to pay its debts as they fall due or if any cheque or bill of exchange drawn by the Customer payable to the Company is dishonoured;

- 6.3 In the event of a default by the Customer, then, without prejudice to any other rights which the Company may have at law or under this Agreement:
- 6.3.1 the Company or its agents may without notice to the Customer enter the Customer's premises or any premises under the control of the Customer for the purposes of recovering the Goods;
- 6.3.2 the Company may recover & resell the Goods;
- 6.3.3 if the Goods cannot be distinguished from similar Goods which the Customer has or claims to have paid for in full, the Company may in its absolute discretion seize all goods matching the description of the Goods & hold same for a reasonable period so that the respective claims of the Company & the Customer may be ascertained. The Company must promptly return to the Customer any goods the property of the Customer & the Company is in no way liable or responsible for any loss or damage to the Goods or for any loss, damage or destruction to the Customer's business howsoever arising from the seizure of the Goods.
- 6.3.4 In the event that the Customer uses the Goods in some manufacturing or construction process of its own or some third party, then the Customer must hold such part of the proceeds of sale of such manufacturing or construction process as relates to the Goods in trust for the Company. Such part will be an amount equal in dollar terms to the amount owing by the Customer to the Company at the time of the receipt of such proceeds. The Customer will pay the Company such funds held in trust upon the demand of the Company.
- 6.4 Separately, Customer hereby charges all its right, title & interest to & in the proceeds of sale of the Collateral (as defined in the PPSA) as original collateral, or any of it, in favour of the Company.
- 7. PPSA**
- 7.1 Defined terms in this clause have the same meaning as given to them in the PPSA.
- 7.2 The Company & the Customer acknowledge that these Terms constitute a Security Agreement & entitle the Company to claim:
- (a) a Purchase Money Security Interest ("PMSI") in favour of the Company over the Collateral supplied or to be supplied to the Customer as Grantor pursuant to these Terms; &
- (b) a security interest over the proceeds of sale of the Collateral referred to in (a) as original collateral.
- 7.3 The goods supplied or to be supplied under these Terms fall within the PPSA classification of "Other Goods" acquired by the Customer pursuant to these Terms.
- 7.4 The Proceeds of sale of the Collateral referred to in clause 8.2(a) falls within the PPSA classification of "Account".
- 7.5 The Company & the Customer acknowledge that the Company, as Secured Party, is entitled to register its Security Interest in the Collateral supplied or to be supplied to the Customer pursuant to these Terms & in the relevant Proceeds.
- 7.6 To the extent permissible at law, the Customer:
- 7.6.1 waives its right to receive notification of or a copy of any Verification Statement confirming registration of a Financing Statement or a Financing Change Statement relating to a Security Interest granted by the Customer to the Company;
- 7.6.2 agrees to indemnify the Company on demand for all costs & expenses, including legal costs & expenses on a solicitor/client basis, associated with the:
- 7.6.2.1 registration or amendment or discharge of any Financing Statement registered by or on behalf of the Company; &
- 7.6.2.2 enforcement or attempted enforcement of any Security Interest granted to the Company by the Customer;
- 7.6.3 agrees that nothing in sections 130 & 143 of the PPSA will apply to these Terms or the Security under these Terms;
- 7.6.4 agrees to waive its right to do any of the following under the PPSA:
- 7.6.4.1 receive notice of removal of an Accession under section 95;
- 7.6.4.2 receive notice of an intention to seize Collateral under section 123;
- 7.6.4.3 object to the purchase of the Collateral by the Secured Party under section 129;
- 7.6.4.4 receive notice of disposal of Collateral under section 130;
- 7.6.4.5 receive a Statement of Account if there is no disposal under section 132(4);
- 7.6.4.6 receive a Statement of Account under section 132(3)(d) following a disposal showing the amounts paid to other Secured Parties & whether Security Interests held by other Secured Parties have been discharged;
- 7.6.4.7 receive notice of retention of Collateral under section 135;
- 7.6.4.8 redeem the Collateral under section 142; &
- 7.6.4.9 reinstate the Security Agreement under section 143.
- 7.6.5 All payments received from the Customer must be applied in accordance with section 14(6)(c) of the PPSA.
- 8. On-Sale**
- The Customer agrees that upon the on-sale of any Goods to third parties, it will:
- 8.1.1 inform any third party involved of these Terms;
- 8.1.2 inform any third party of the Company's product warranties if any; &
- 8.1.3 not make any misrepresentations to third parties about the Goods.
- 9. Trustee Capacity**
- If the Customer is the trustee of a trust (whether disclosed to the Company or not), the Customer warrants to Company that:
- 9.1 the Customer enters into this Agreement in both its capacity as trustee & in its personal capacity;
- 9.2 the Customer has the right to be indemnified out of trust assets;
- 9.3 the Customer has the power under the trust deed to enter into this Agreement; &
- 9.4 the Customer will not retire as trustee of the trust or appoint any new or additional trustee without first advising the Company.
- 10. Indemnity**
- To the full extent permitted by law, the Customer will indemnify the Company & keep the Company indemnified from & against any liability & any loss or damage the Company may sustain, as a result of any breach, act or omission, arising directly or indirectly from or in connection with any breach of any of these Terms by the Customer or its representatives
- 11. Force Majeure**
- 11.1 The Company will not be liable for the consequences of any failure or delay in performing any of its obligations under this Agreement to the extent that such failure or delay is due directly or indirectly to any Force Majeure Event.
- 11.2 If a Force Majeure Event arises, the Company will notify the Customer in writing of the Force Majeure Event & the likely impact it will have on the Company's performance under this Agreement. If the Force Majeure Event affects the capacity of the Company to complete its material obligations under this Agreement in a timely manner, the Company may by notice to the Customer terminate this Agreement without any liability whatsoever on its part arising from that termination.
- 12. General**
- 12.1 These Terms are to be construed in accordance with the laws from time to time in the State of Victoria & the Commonwealth of Australia. The parties submit to the non-exclusive jurisdiction of the Courts of Victoria, Australia & any courts which may hear appeals from those courts in respect to any proceedings in connection with these Terms.
- 12.2 These Terms contain all of the terms & conditions of the contract between the parties & may only be varied by agreement in writing between the parties.
- 12.3 Any conditions found to be void, unenforceable or illegal may, to that extent be severed from the Agreement.
- 12.4 No waiver of any of these Terms or failure to exercise a right or remedy by the Company will be considered to imply or constitute a further waiver by the Company of the same or any other term, condition, right or remedy.

PURCHASE ORDERS

Purchase orders can be placed with MATElec Australia by way of a number of methods:

Telephone Orders: (Free call: 1800 281 282)
Email: customer@matelecaustralia.com.au

On receipt of (receiving) a purchase order you will be contacted by a Customer Service Representative, confirming receipt of your purchase order and advising any queries pertaining to the order. Queries may include business opportunities, applicable current promotions, delivery instructions, pricing discrepancies, back orders and therefore subsequent ETA's or product alternatives etc.

On dispatch of your purchase order, Dispatch Confirmation Advice may be forwarded by email detailing delivery details including carrier and consignment note number.

MATElec Australia takes great pride in an exceptionally high order fill rate. However, in the event stock is unable to be supplied as expected, product alternatives are explored and offered where applicable. Product turn-around times will be confirmed and advised. MATElec Australia account management includes methodical customer back order management, including notification of the latest ETA's, order confirmation, order consolidation and or amendments where applicable.

TECHNICAL SUPPORT

The MATElec Australia Technical Support team provides unparalleled support to clients, installers and users of it's products. This support ranges from product selection, through to application and usage optimization.

Since the design and manufacture of many of the products has been implemented in-house, product knowledge is a significant resource which MATElec Australia makes available to it's customer base.

SALES AND SERVICE

MATElec Australia proudly services the Australian Electrical Wholesale market through manufacturing, supplying and distributing competitively priced quality products in an effective, efficient and professional manner.

MATElec Australia's products and services are exclusively available through recognised Electrical Wholesalers only, therefore supporting the wholesaler industry and maintaining standards and integrity within the industry. The MATElec Australian network enables us to provide our customers with a superior service, including 'second to none' after sales service and ongoing product support.

QUOTATIONS

Obligation free quotations are encouraged and welcomed here at MATElec Australia. All quotations tendered or sourced are processed and submitted promptly, in most circumstances the same day. Quotations are processed by Sales at Head Office; a file will be opened on receipt of the quotation containing all information pertaining to the quotation.

Quotations include the following information:

MATElec Australia quotation number, quotation reference (if provided), product details, standard product packaging, quantity, price (ex GST), validity and delivery costs pertaining to quotation if applicable.

DELIVERY AND FREIGHT

Where possible MATElec Australia provides a standard 24 hour delivery time for Metropolitan and surrounding areas across Australia, and 48 hours delivery for Queensland and Regional areas for orders placed before 4pm. MATElec Australia enjoys the flexibility of a number of highly reputed carriers, allowing majority of all wholesalers to enjoy such delivery times regardless of their location. MATElec Australia is able to provide alternative delivery inside these periods for situations where needed.

The warehouse, from which the order is to be dispatched, is dependent on Customer location and stock availability. Every product dispatched from MATElec Australia warehouses is carefully picked and packed. Great pride is taken ensuring each and every product arrives at the wholesaler in perfect saleable condition and in a timely manner.

Every order dispatched leaves MATElec Australia with weight details, number of boxes, carrier and consignment note number. In the event there is a query relating to delivery or freight, all are handled from Head Office in Shepparton, VIC.

Orders exceeding \$250.00 +GST are F.I.S (free delivery into store). Orders under this amount, will attract freight charges. Freight charges are clearly itemised on the invoice where freight is charged. Freight charges can vary from state to state. The option to nominate your preferred carrier is also available.

ADMIN

MATElec Australia's Admin Department operates to an exceptionally high standard with all processes streamlined to ensure total customer satisfaction.

Based at Shepparton, our competent Admin team members are always available to promptly attend to any accounting queries. From the 48 hour turnaround time on credit applications, to the mail out by the 1st working day of the new month of customer statements, MATElec Australia pro-actively ensures that customer expectations are exceeded.

Immediate attention is given to all administration enquiries including:

- Account Balances
- Payment Receipts
- Goods Return Requests (GRA's)
- Copy documents
- Customer historical data.

MATElec Australia's Admin Department has the ability to tailor an accounting/reporting process to best meet the many varied needs of its vast customer base. Services can include:

- Statement consolidation for Group Accounts
- Settlement Discounts.



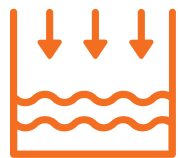
**SMOKE
DETECTORS**



**CABLE
ACCESSORIES**



**DAY/NIGHT
SWITCHES**



**LIQUID LEVEL
CONTROL**



**MOTION
SENSING**



**OUTDOOR
LIGHTING**



**PUMP & MOTOR
CONTROL**



**POWER
METERING**



**RENEWABLES
HARDWARE**

Easy to buy ✓ Easy to sell ✓ Easy to install ✓



Free call: **1800 281 282**

customer@matelecaustralia.com.au

www.matelecaustralia.com.au

HEAD OFFICE

PO BOX 7093 Shepparton VIC 3632
5 Telford Drive Shepparton VIC 3630



**HAPPY
PEOPLE**
are our
FUTURE